



## Pro Fittings 2020



Manufacturers of quality lighting since 1920



Certificate Number 12255  
ISO 9001: 2015



British Electric Lamps Ltd  
[www.belllighting.co.uk](http://www.belllighting.co.uk)



## Pro Fittings

Offering quality products and service has been our mission since the companies inception in 1920. We are still a family owned British company who pride ourselves on our original values of; outstanding innovation for lighting products & providing lighting solutions for our customers.

We have such confidence in our products, that we are now proudly offering a minimum 7 year warranty, accompanied with 2 year on site support across our extensive range of professional LED Fixtures.

Our transparent warranties and no quibble 2 year support package has propelled us to the forefront of the market while ensuring our customers are backed by the very best support.

You can be assured that with the above guarantee, product life of 50,000 hours and on site support your BELL fittings offer a comprehensive 'fit and forget' solution. Saving energy, CO<sub>2</sub> emissions and the costs associated with maintaining old inefficient units.



### 7/10 Year Warranty

Bell Lighting will repair or replace any product that fails to operate normally within a 7 or 10 year period (dependent on individual product warranty) from the date of purchase.

### 2 Year On-Site Warranty

In the event that a product covered by the 2 year On-Site Warranty fails within 2 years of the purchase date Bell Lighting will where possible authorise the installer to replace the failed product and reimburse fair and reasonable costs. In the event that agreement can not be reached Bell Lighting engineers will carry out the repair or replacement.



In addition to our extended warranty period, all BELL lighting fittings are rated L80B10, with a 50,000 hour product life. All fittings will still have 80% as a minimum of initial lumens, only 10% as a maximum, may fail to achieve this.

#### The warranty shall be void in the following circumstances:-

- Non-compliance with installation and safety regulations given in the installation instructions
- Modification or repair of any product by the installer, end user or anyone unauthorised to do so
- Improper use or installation, damage by accident or neglect, of any product by the installer, end user or any third party
- If the product is operated outside of the stated operating temperature of the lamp or luminaire.

<sup>3</sup> Subject to terms & conditions



# Illumina

## LED High/Low Bay

- Genuine replacement for 250/400W Metal Halide
- Suitable for High Bay and Low Bay applications 4 - 12m
- Fully sealed fixture, ideal for food preparation & cold store areas when used with plastic cover (code: 08833/08834)
- IP65 Base Unit
- Meanwell Driver
- Anthracite Finish
- Bridgelux LED
- 50000 Hours
- Now with 1-10V dimmable driver as standard
- Photocell option now available - Call for details



120W  $\equiv$  250W MH Energy Saving 52%

180W  $\equiv$  400W MH Energy Saving 55%

Code	W	Description	Lm	Temp	Weight Kg	Hours
08835	120	Illumina IP65 120W High Bay / Low Bay Base Unit	17000*	4500K	4.46	50000
08836	180	Illumina IP65 180W High Bay / Low Bay Base Unit	26000**	4500K	7.91	50000


Code	Description
08827	120° Aluminium Reflector for 120W Illumina IP65 High Bay / Low Bay
08828	90° Aluminium Reflector for 120W Illumina IP65 High Bay / Low Bay
08831	90° Polycarbonate Reflector for 120W Illumina IP65 High Bay / Low Bay
08833	Plastic Cover for 120W Illumina IP65 High Bay / Low Bay - <b>Required for IP65 rating</b>
08829	120° Aluminium Reflector for 180W Illumina IP65 High Bay / Low Bay
08830	90° Aluminium Reflector for 180W Illumina IP65 High Bay / Low Bay
08832	90° Polycarbonate Reflector for 180W Illumina IP65 High Bay / Low Bay
08834	Plastic Cover for 180W Illumina IP65 High Bay / Low Bay - <b>Required for IP65 rating</b>



<sup>1</sup> Exceeds EU standard of 70 for Lumens Maintenance Ratio  
<sup>2</sup> Exceeds EU standard of Ra 80 for Colour Rendering Index  
<sup>3</sup> Subject to terms & conditions (Contact Customer Service)  
<sup>4</sup> When used with plastic cover 08833/08834  
 \* IP65 version 15500 lm \*\* IP65 version 23000 lm

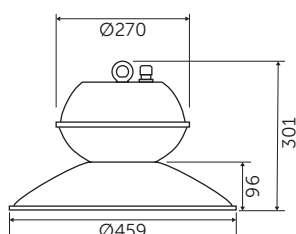


# Technical Specification

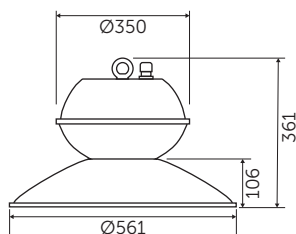
Data	
Construction	Die Cast Aluminium Base
Driver	1-10V Dimmable Meanwell  /HLG
LED Chip	Bridgelux
IP Rating	IP65 (with cover)
Operating Temp	-30°C to +35°C
Input Voltage	100 - 264V
Power Factor	> 0.9
CRI	85 - Exceeds EU standard of Ra 80 for Colour Rendering Index
LMR	80 - Exceeds EU standard of 70 for Lumens Maintenance Ratio
ECA Compliant	Yes

\* All BELL Lighting luminaires are rated L80 B10, so for a 50,000 hour product. L80B10 at 50,000 hours our fittings will still have 80% of initial lumen, only 10% of fittings will fail to achieve this.

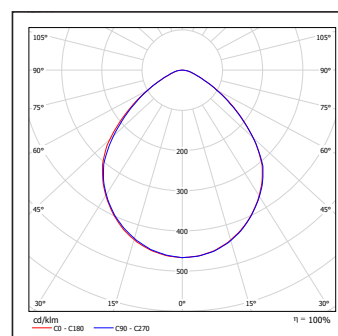
**08835 120W 120°**



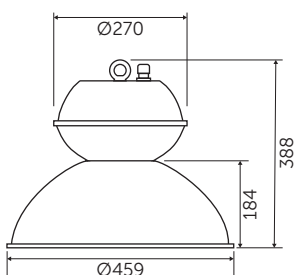
**08836 180W 120°**



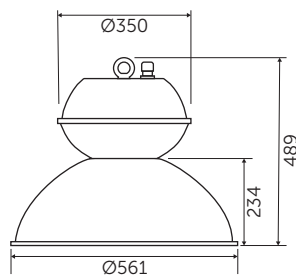
**08835 120W 120°**



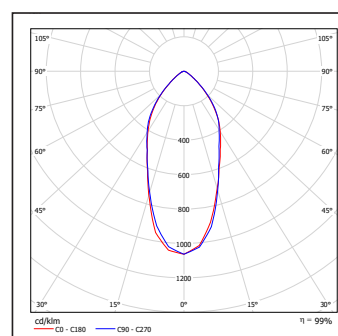
**08835 120W 90°**



**08836 180W 90°**



**08836 180W 90°**



Aluminium Reflector



Polycarbonate Reflector





# Illuminaslim

## LED High Bay

- TUV Isolated Driver
- 0-10V dimming as standard
- Seoul Semiconductor LED
- Built-in adjustable daylight sensor (sensor versions)
- Sensor parameters can be set by optional remote control (sensor versions)
- High ambient temperature version also available on request
- Genuine Replacement for 250W/400W/600W Metal Halide or Sodium
- Perfect for warehousing, large retail and factories
- Emergency options available
- Self Test options available

Optional remote control available for use with sensor versions only.



**NEW**

100W  $\equiv$  250W MH/SON Energy Saving 60%

150W  $\equiv$  400W MH/SON Energy Saving 63%

200W  $\equiv$  600W MH/SON Energy Saving 66%



Code	W	Description	Lm	Temp	Hours
08900	100	Illumina Slim 100W LED Highbay 120° lens	14000	4000K	50000
08902	100	Illumina Slim 100W LED Highbay 90° lens	14000	4000K	50000
08901	150	Illumina Slim 150W LED Highbay 120° lens	21000	4000K	50000
08903	150	Illumina Slim 150W LED Highbay 90° lens	21000	4000K	50000
08916	200	Illumina Slim 200W LED Highbay 90° lens	28000	4000K	50000
08917	200	Illumina Slim 200W LED Highbay 120° lens	28000	4000K	50000
08906	100	Illumina Slim 100W LED High/Low Bay 90° lens + Sensor	14000	4000K	50000
08904	100	Illumina Slim 100W LED High/Low Bay 120° lens + Sensor	14000	4000K	50000
08907	150	Illumina Slim 150W LED High/Low Bay 90° lens + Sensor	21000	4000K	50000
08905	150	Illumina Slim 150W LED High/Low Bay 120° lens + Sensor	21000	4000K	50000
08918	200	Illumina Slim 200W LED High/Low Bay 90° lens + Sensor	28000	4000K	50000
08919	200	Illumina Slim 200W LED High/Low Bay 120° lens + Sensor	28000	4000K	50000
08970	-	Prismatic Reflector	-	-	-
08971	-	Aluminium Reflector	-	-	-
08962	-	Remote control	-	-	-



Exceeds EU standard of 150lm/W  
EU standard of 150lm/W  
no terms & conditions

Lumens Maintenance Ratio  
Colour Rendering Index  
Contact Customer Service



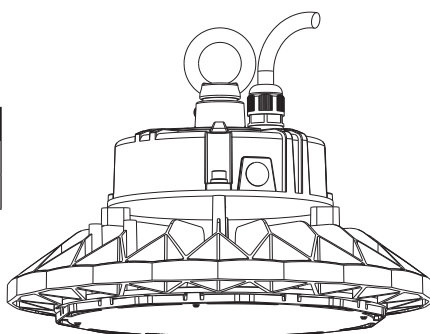
# luminaslim

## Technical Specification

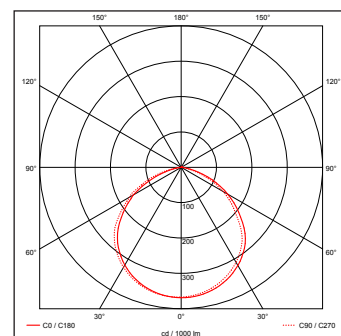
Data	
Construction	Die Cast Aluminium
Driver	Sosen
LED Chip	Seoul
IP Rating	IP65
Operating Temp	-30°C to +35°C / Emergency version minimum temperature -5°C
Input Voltage	220 - 240V
Power Factor	> 0.9
CRI	85 - Exceeds EU standard of Ra 85 for Colour Rendering Index
LMR	80 - Exceeds EU standard of 70 for Lumens Maintenance Ratio
ECA Compliant	Yes
Weight	100W 2.15Kg / 100W Sensor 2.78Kg / 150W 2.9Kg / 150W Sensor 3.53kg / 200W 2.9kg / 200W Sensor 3.53Kg

\* All BELL Lighting luminaires are rated L80 B10, so for a 50,000 hour product. L80B10 at 50,000 hours our fittings will still have 80% of initial lumen, only 10% of fittings will fail to achieve this.

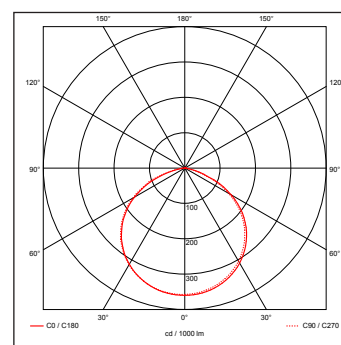
	100W	150W	200W
Diameter	250mm	250mm	280mm
Height	173mm	203mm	203mm



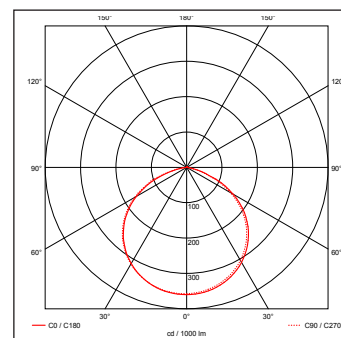
**08900 100W 120° lens**



**08901 150W 120° lens**



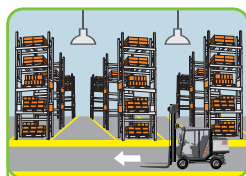
**08917 200W 120° lens**



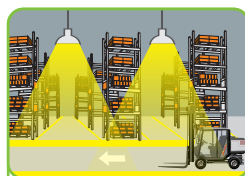
### Optional infra-red remote control available for sensor versions

Quick and easy adjustment for multiple fittings; dimming level, presence detection, light levels & automatic on-off time. Average 15M range.

### 3 Step Dimming Function



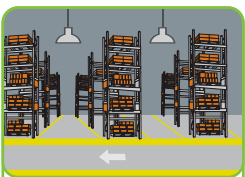
With sufficient natural light, the light does not switch on when presence is detected.



With insufficient natural light, the sensor switches on automatically when presence is detected.



After the hold-time, the sensor dims the fitting to the pre-set low light level if no motion is detected.



Fitting switches off after the stand-by period has elapsed if no motion is detected.



# IlluminaLinear

## LED High Intensity High/Low Bay

**Perfect for high ceiling warehouses, industrial facilities, exhibition centres, shopping malls & stadiums.**

- Genuine replacement for 400W Metal Halide
- Suitable for High Bay and Low Bay applications 4 - 12m
- Built-in adjustable daylight sensor (sensor versions)
- Sensor parameters can be set by optional remote control (sensor versions)
- High efficiency up to 130lm/w
- Specially designed for warehouse aisles with the fittings rectangular lighting pattern's
- Long and narrow pattern's not only contribute to lighting lux levels but also give improved uniformity
- Lens can be replaced easily
- Multiple mounting options (suspension mount, adjustable surface mount)
- Emergency options available
- Self Test options available



200W  $\equiv$  400W MH/SON Energy Saving 50%



Code	W	Description	Lm	Temp	Hours
08950	200	200W Illumina Linear High Rack 30x70°	26000	4000K	50000
08951	200	200W Illumina Linear Low Rack 40x120°	26000	4000K	50000
08952	200	200W Illumina Linear High Open Area 90°	26000	4000K	50000
08953	200	200W Illumina Linear Low Open Area 120°	26000	4000K	50000
08954	200	200W Illumina Linear High Rack & Sensor 30x70°	26000	4000K	50000
08955	200	200W Illumina Linear Low Rack & Sensor 40x120°	26000	4000K	50000
08956	200	200W Illumina Linear High Open Area & Sensor 90°	26000	4000K	50000
08957	200	200W Illumina Linear Low Open Area & Sensor 120°	26000	4000K	50000
08962	-	Remote control	-	-	-



<sup>1</sup> Exceeds EU standard of 70 for Lumens Maintenance Ratio  
<sup>2</sup> Exceeds EU standard of RA 80 for Colour Rendering Index  
<sup>3</sup> Subject to terms & conditions (Contact Customer Service)

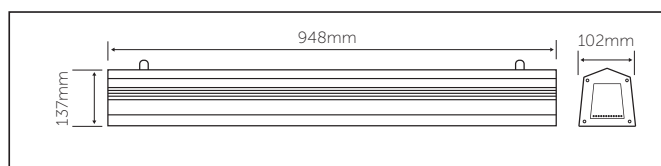


# Technical Specification

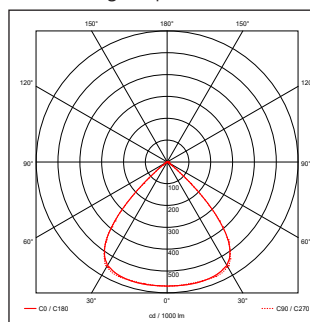
Data	
Construction	Extruded Aluminium
Driver	Sosen
LED Chip	Seoul
IP Rating	IP65
Operating Temp	-30°C to +35°C / Emergency version minimum temperature -5°C
Input Voltage	220 - 240V
Power Factor	> 0.9
CRI	85 - Exceeds EU standard of Ra 85 for Colour Rendering Index
LMR	80 - Exceeds EU standard of 70 for Lumens Maintenance Ratio
ECA Compliant	Yes
Weight	7.0Kg

\* All BELL Lighting luminaires are rated L80 B10, so for a 50,000 hour product. L80B10 at 50,000 hours our fittings will still have 80% of initial lumen, only 10% of fittings will fail to achieve this.

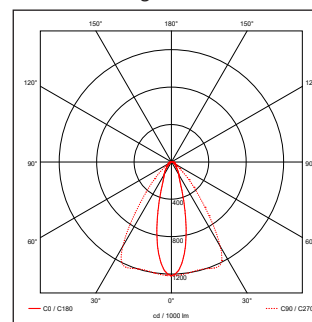
**08950-57**



**08952 200W**  
High Open Area



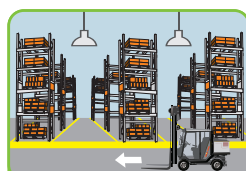
**08950 200W**  
High Rack



## Sensor versions supplied complete with infra-red remote control.

Quick and easy adjustment for multiple fittings; dimming level, presence detection, light levels & automatic on-off time. Average 15M range.

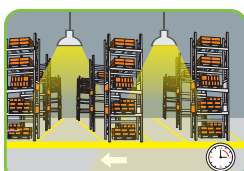
## 3 Step Dimming Function



With sufficient natural light, the light does not switch on when presence is detected.



With insufficient natural light, the sensor switches on automatically when presence is detected.



After the hold-time, the sensor dims the fitting to the pre-set low light level if no motion is detected.



Fitting switches off after the stand-by period has elapsed if no motion is detected.



# SkylineELITE+

## Asymmetric LED Floodlight

- 1200W Asymmetric Floodlight
- Genuine replacement for 2000W Metal Halide
- 109 LM/W
- IP66
- Fully adjustable mounting bracket
- Angle markings for easy alignment
- Asymmetric 0% ULOR
- Low weight & windage

**NEW**


1200W  $\equiv$  2000W MH Energy Saving 46%

Code	V	W	Description	Lm	Temp	lm/W	Hours
10760	100-240	1200	Asymmetric LED Floodlight	131000	4000K	109	70000



<sup>1</sup> Exceeds EU standard of 70 for Lumens Maintenance Ratio  
<sup>2</sup> Exceeds EU standard of RA 80 for Colour Rendering Index  
<sup>3</sup> Subject to terms & conditions (Contact Customer Service)



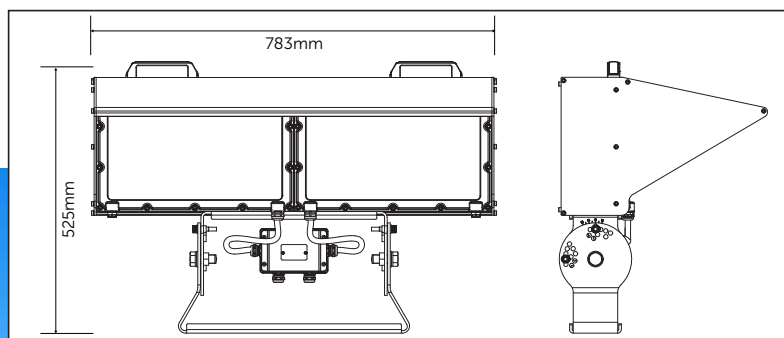
# SkylineELITE+

## Technical Specification

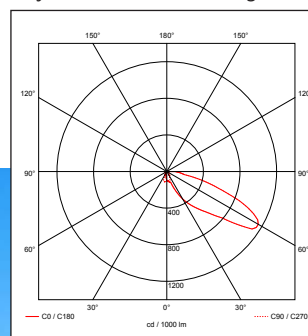
Data	
Construction	Die Cast LM6 Aluminium & Polycarbonate lens
Driver	Inventronics 1-10V Dim
LED Chip	Oslon
IP Rating	IP66
Operating Temp	-30°C to +35°C
Input Voltage	100 - 240V
Power Factor	> 0.9
CRI	85
LMR	80 - Equal to EU standard of 70 for Lumens Maintenance Ratio
ECA Compliant	Yes
Weight	28.8 Kg
Windage	0.21M <sup>2</sup>

\* All BELL Lighting luminaires are rated L80 B10, so for a 50,000 hour product. L80B10 at 50,000 hours our fittings will still have 80% of initial lumen, only 10% of fittings will fail to achieve this.

10760



10760 1200W  
Asymmetric LED Floodlight 30°





# SkylineELITE+

## Symmetric LED Floodlight

- 600W Symmetric Floodlight
- Genuine replacement for 1500W Metal Halide
- 160 LM/W
- IP66
- Visor for low upward light
- Low weight & windage
- Fully adjustable mounting bracket
- Angle markings for easy alignment

**NEW**


600W  $\equiv$  1500W MH Energy Saving 65%

Code	V	W	Description	Lm	Temp	lm/W	Hours
10770	100-240	600	Symmetric LED Floodlight 60°	89000	4000K	120	70000
10771	100-240	600	Symmetric LED Floodlight 30°	93000	4000K	155	70000



<sup>1</sup> Exceeds EU standard of 70 for Lumens Maintenance Ratio  
<sup>2</sup> Exceeds EU standard of RA 80 for Colour Rendering Index  
<sup>3</sup> Subject to terms & conditions (Contact Customer Service)



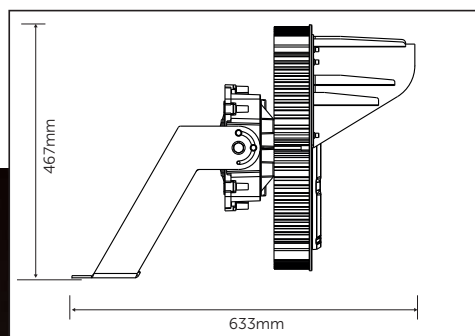
# SkylineELITE+

## Technical Specification

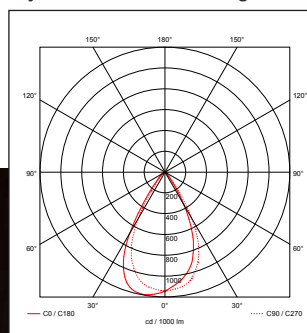
Data	
Construction	Die Cast LM6 Aluminium & Polycarbonate lens
Driver	Inventronics 1-10V Dim
LED Chip	Philips
IP Rating	IP66
Operating Temp	-30°C to +35°C
Input Voltage	100 - 240V
Power Factor	> 0.9
CRI	85
LMR	80 - Equal to EU standard of 70 for Lumens Maintenance Ratio
ECA Compliant	Yes
Weight	18.6 Kg
Windage	0.11M <sup>2</sup>

\* All BELL Lighting luminaires are rated L80 B10, so for a 50,000 hour product. L80B10 at 50,000 hours our fittings will still have 80% of initial lumen, only 10% of fittings will fail to achieve this.

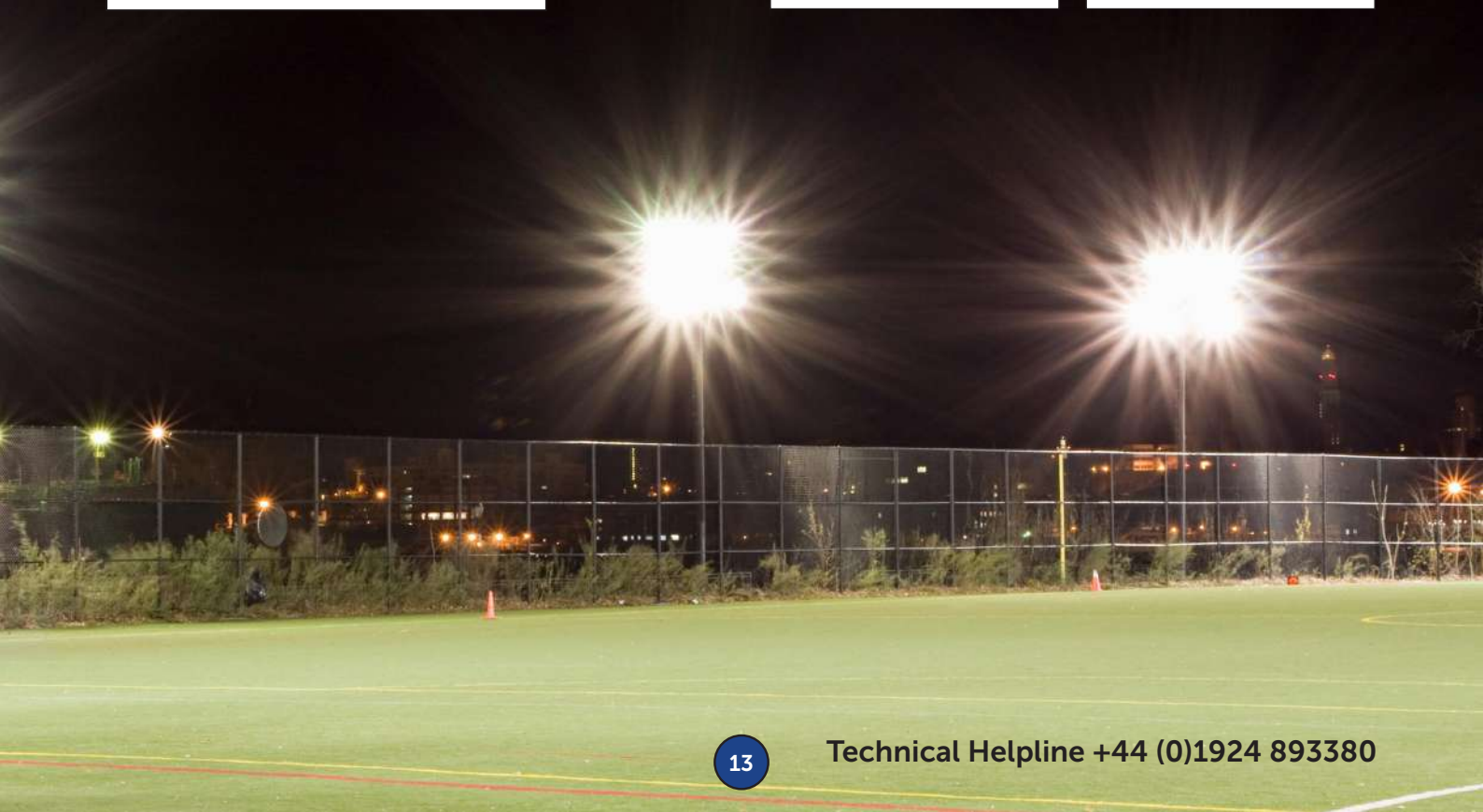
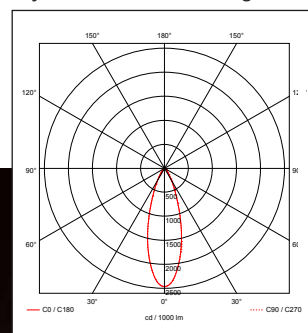
10770 / 10771



**10770 600W**  
Symmetric LED Floodlight 60°



**10771 600W**  
Symmetric LED Floodlight 30°





# SkylineELITE

## Asymmetric/Symmetric LED Floodlight

Designed and engineered in the UK specifically to meet the requirements for sports lighting and to reduce light pollution levels. The Skyline Elite is a high specification floodlight with a 70,000 hour lifespan, 5 year guarantee and one year on site warranty.



- Genuine replacement for 250/400/600W Metal Halide/ Sodium Floodlight
- Perfect for sports, building facade's, landscape, security & car park lighting
- Asymmetric distribution, low light pollution\*
- Up to 133 lm/W
- Surge protected up to 10,000 volts (250/240W) for lighting protection
- Cool White
- Aerodynamic, streamlined design for reduced windage
- Fully encapsulated IP66 TUV certified driver
- Nichia GRT-V1 LED / Meanwell Driver
- Long life 70,000 hours (L80 B10 @ 25° C)
- IK08 Impact Rating
- Robust construction IP66
- Standard universal mounting bracket
- Supplied pre-flexed (1.5M), tool free entry and construction for simple and quick installation



# skylineELITE

## Asymmetric/Symmetric LED Floodlight

### Silicone Gasket.

High quality anti-corrosion resealable gasket.

### Reflector.

High efficiency thermoplastic reflector.

### High performance Lens.

Specially designed unique optical lens system providing optimal light control.

### Nichia LED.

High efficiency LED using the latest Nichia GRT-V1 LED.

### Clip Opening.

Ensures quality installation and future maintenance guarantee.

### Die-cast Marine Grade Aluminium LM6 body.

Innovative shape for improved airflow and increased thermal efficiency and reduced windage.

### LED Heat Sink

Specially designed flat contact area for correct LED thermal management.

### Driver Heat Sink

Specially designed integral surface area heatsink to ensure driver thermal control.

### IP69 Pressure Parity Compensator

Ensures pressure between the inside and outside of the fitting to maintain integrity and IP rating.

### Cable Gland

IP68 Stainless Steel Cable Gland.

### Angle Adjustment

Precise angle adjustment with tool free installation.

### Toughened Glass Visor Shield.

### Precision Designed Hinges.

For easy installation.

### Meanwell HLG.

High performance IP66 resin encapsulated driver.

Contact BELL Technical Helpline for advice on compatible columns and correct mounting height.




<sup>1</sup> Exceeds EU standard of 70 for Lumens Maintenance Ratio  
<sup>2</sup> Exceeds EU standard of RA 80 for Colour Rendering Index  
<sup>3</sup> Subject to terms & conditions (Contact Customer Service)  
 \* Asymmetric version

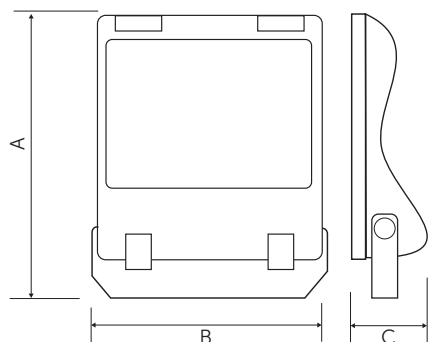


# Asymmetric/Symmetric LED Floodlight

## Technical Specification

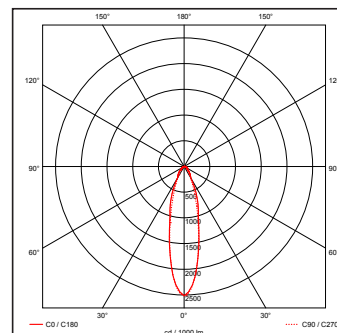
Data	
Construction	Polyester coated die-cast LM6 Marine Grade aluminium & toughened safety glass
Driver	Meanwell  /HLG
LED Chip	Nichia GRT-V1
IP Rating	IP66
Operating Temp	-30°C to +35°C
Input Voltage	100 - 264V
Power Factor	> 0.9
CRI	85 - Exceeds EU standard of Ra 80 for Colour Rendering Index
LMR	80 - Exceeds EU standard of 70 for Lumens Maintenance Ratio
ECA Compliant	Yes
Windage	80W 0.1M <sup>2</sup> / 150W 0.12M <sup>2</sup> / 240W 0.2M <sup>2</sup>
Weight	80W - 4.6Kg / 150W - 6.8Kg / 240W - 8.9Kg

\* All BELL Lighting luminaires are rated L80 B10, so for a 50,000 hour product. L80B10 at 50,000 hours our fittings will still have 80% of initial lumen, only 10% of fittings will fail to achieve this.



	80W	150W	240W
A	360mm	325mm	418mm
B	265mm	413mm	452mm
C	82mm	83mm	87mm

08856 150W 30° Projector



Code	V	W	Description	Lm	Temp	lm/W	Peak Intensity	Hours
08850	110-264	80	80W Skyline Elite Symmetric Flood Light IP66	10000	4000	125	1332	70000
08851	110-264	80	80W Skyline Elite Asymmetric Flood Light IP66	10000	4000	125	499	70000
08852	110-264	80	80W Skyline Elite 30° Flood Light IP66	10000	4000	125	2562	70000
08853	110-264	80	80W Skyline Elite 15° Flood Light IP66	10000	4000	125	5006	70000
08854	110-264	150	150W Skyline Elite Symmetric Flood Light IP66	20000	4000	133	1315	70000
08855	110-264	150	150W Skyline Elite Asymmetric Flood Light IP66	20000	4000	133	481	70000
08856	110-264	150	150W Skyline Elite 30° Flood Light IP66	20000	4000	133	2513	70000
08857	110-264	150	150W Skyline Elite 15° Flood Light IP66	20000	4000	133	4800	70000
08858	110-264	240	240W Skyline Elite Symmetric Flood Light IP66	30000	4000	125	1339	70000
08859	110-264	240	240W Skyline Elite Asymmetric Flood Light IP66	30000	4000	125	502	70000
08860	110-264	240	240W Skyline Elite 30° Flood Light IP66	30000	4000	125	1567	70000
08861	110-264	240	240W Skyline Elite 15° Flood Light IP66	30000	4000	125	4587	70000



<sup>1</sup> Exceeds EU standard of 70 for Lumens Maintenance Ratio  
<sup>2</sup> Exceeds EU standard of RA 80 for Colour Rendering Index  
<sup>3</sup> Subject to terms & conditions (Contact Customer Service)



# Light Pollution

## What is light pollution?

Most of us are familiar with air, water, and land pollution, but did you know that light can also be a pollutant?

The inappropriate or excessive use of artificial light – known as light pollution – can have serious environmental consequences for humans, wildlife, and our climate. Components of light pollution include:

**Glare** – excessive brightness that causes visual discomfort.

**Skyglow** – brightening of the night sky over inhabited areas, also known as upward light ratio (ULR).

**Light trespass** – light falling where it is not intended.

**Clutter** – bright, confusing and excessive light sources.

Light pollution is a side effect of industrial civilization. Its sources include building exterior and interior lighting, advertising, commercial properties, offices, factories, street lights and illuminated sporting venues.

The fact is that much of the outdoor lighting used at night is inefficient, overly bright, poorly targeted, improperly shielded, and, in many cases, completely unnecessary. This light, and the electricity used to create it, is being wasted by spilling it into the sky, rather than focusing it on to the actual objects.

Modern society requires outdoor lighting for a variety of needs, including safety and commerce. The Institute of Lighting Engineers recognises this but advocates that any

required lighting be used wisely. To minimise the harmful effects of light pollution, lighting should:

**Only be on when needed / Only light the area that needs it / Be no brighter than necessary / Minimise blue light emissions / Be fully shielded (pointing downward).**

The transition from sodium to LED exterior lighting over recent years appears to have made global light pollution worse not better, scientists have reported.

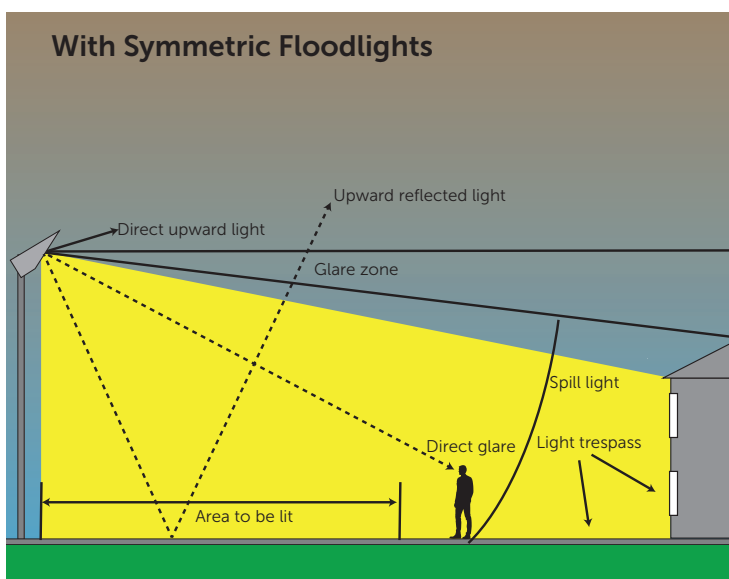
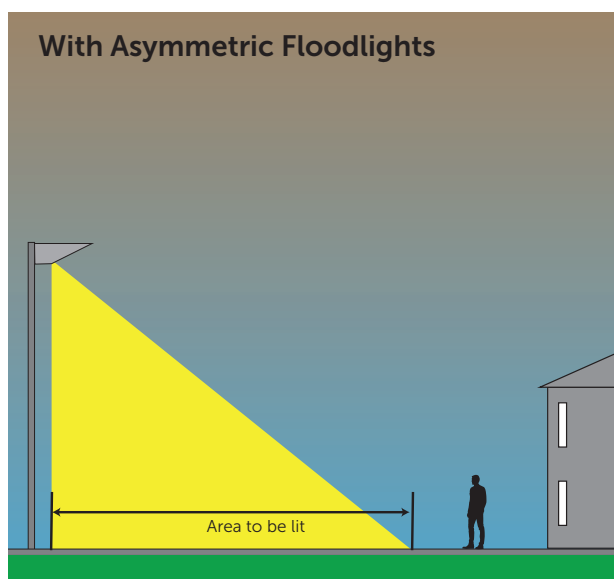
The findings are certain to increase the pressure on the lighting industry to take light pollution seriously and improve the optics and upward light control.

**BELL LED Asymmetric Floodlights minimise light pollution.**

Skyline Elite Asymmetric floodlights have been designed and developed to meet the strict requirements for a range of sports and area lighting applications.

Specifically designed to control obtrusive light, a precision lensing system ensures a tight beam pattern, reducing overspill upwards light and directing light only where it is needed.

BELL lighting is constantly striving towards reducing light skyglow (ULR), and the Skyline Elite Floodlight is at the forefront of this pollution reducing technology.





# SkylinePRO

## LED Floodlight

- Genuine replacement for 250/400W Metal Halide Floodlights
- Robust, anti-seize aluminium clip secured front cover for easy installation
- Fully encapsulated IP65 TUV certified Meanwell driver
- Rated voltage 110/240V, suitable for site lighting (Photocell version 240V)
- Suitable for cold storage

### Marine grade version for coastal areas and shipping<sup>4</sup>

- 316 marine grade stainless steel brackets and fixings
- Cast LM6 aluminium body, anodised and powder coated with a special marine Akzo Nobel coating.

### Options

- Photocell version complete with Lucy Zodion miniature photocell 55 lux - dusk to dawn
- Emergency version available
- Warm White & Daylight options



200W  $\equiv$  400W MH/SON Energy Saving 50%


100W  $\equiv$  250W MH/SON Energy Saving 60%

Code	V	W	Description	Lm	Temp	lm/W	Peak Intensity	Hours
04421	110/240	200	Skyline Pro LED Floodlight 200W	22000	4200K	110	8412	50000
04420	110/240	100	Skyline Pro LED Floodlight 100W	11000	4200K	110	4200	50000
04427	240	200	Skyline Pro LED Floodlight 200W Photocell version	22000	4200K	110	8412	50000
04426	240	100	Skyline Pro LED Floodlight 100W Photocell version	11000	4200K	110	4200	50000
04416	240	200	Skyline Pro LED Floodlight 200W Emergency Version	22000 (1100 Emergency mode)	4200K	110	8412	50000
04415	240	100	Skyline Pro LED Floodlight 100W Emergency Version	11000 (1100 Emergency mode)	4200K	110	4200	50000
04461	110/240	200	Skyline Pro LED Marine Grade Floodlight 200W	22000	4200K	110	8412	50000
04460	110/240	100	Skyline Pro LED Marine Grade Floodlight 100W	11000	4200K	110	4200	50000
04463	240	200	Skyline Pro LED Marine Grade Floodlight 200W Photocell	22000	4200K	110	8412	50000
04462	240	100	Skyline Pro LED Marine Grade Floodlight 100W Photocell	11000	4200K	110	4200	50000



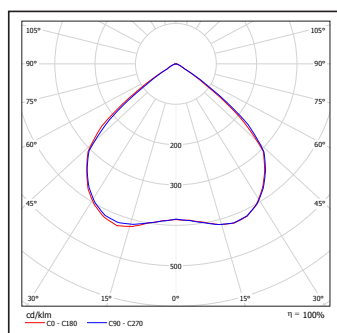
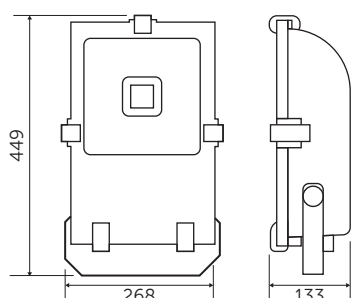
# SkylinePRO

## Technical Specification

Data	
<b>Construction</b>	Polyester coated die-cast LM6 aluminium & toughened safety glass. Marine grade version is cast LM6 aluminium, anodised and powder coated with a special marine Akzo Nobel application to exterior
<b>Driver</b>	Meanwell  /HLG
<b>LED Chip</b>	Bridgelux
<b>IP Rating</b>	IP65
<b>Operating Temp</b>	-30°C to +45°C / Emergency version minimum temperature -5°C
<b>Input Voltage</b>	100 - 264V
<b>Power Factor</b>	> 0.9
<b>CRI</b>	85 - Exceeds EU standard of Ra 80 for Colour Rendering Index
<b>LMR</b>	80 - Exceeds EU standard of 70 for Lumens Maintenance Ratio
<b>ECA Compliant</b>	Yes
<b>Windage</b>	100W 0.11M <sup>2</sup> / 200W 0.18M <sup>2</sup>
<b>Weight</b>	100W - 5.2Kg / 200W - 10.5Kg

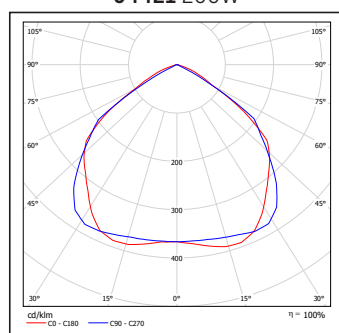
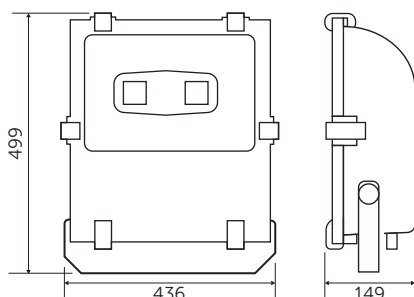
\* All BELL Lighting luminaires are rated L80 B10, so for a 50,000 hour product. L80B10 at 50,000 hours our fittings will still have 80% of initial lumen, only 10% of fittings will fail to achieve this.

04420 100W



100W

04421 200W



200W

Emergency versions must be tested in line with the requirements of BS5266, failure to do so may effect battery life and warranty.



- <sup>1</sup> Exceeds EU standard of 70 for Lumens Maintenance Ratio
- <sup>2</sup> Exceeds EU standard of RA 80 for Colour Rendering Index
- <sup>3</sup> Subject to terms & conditions (Contact Customer Service)
- <sup>4</sup> Contact Customer Service for further details



# SkylinePRO

## LED Wallpack

- Genuine replacement for 70W Metal Halide & Sodium
- Fully encapsulated IP65 TUV Certified Driver
- High impact polycarbonate lens
- Bridgelux COB LED
- Up to 65% energy saving
- 50000 hours
- 7 year guarantee (Excluding Battery)<sup>3</sup>
- Suitable for BESA box mounting

### Options

- Photocell version complete with Lucy Zodion miniature photocell (55 lux)
- Emergency / Emergency Photocell version
- Asymmetric product available on request



30W  Energy Saving 57%



Emergency versions must be tested in line with the requirements of BS5266, failure to do so may effect battery life and warranty.


Code	Volts	W	Description	Lm	lm/W	Viewing Angle	Temp	Hours
04425	110/240	30	Skyline Pro LED Wallpack	2550	85	120°	4200K	50000
04428	240	30	Skyline Pro LED Wallpack Photocell version	2550	85	120°	4200K	50000
04419	240	30	Skyline Pro LED Wallpack Emergency version	2550	85	120°	4200K	50000
04417	240	30	Skyline Pro LED Wallpack Emergency Photocell version	2550	85	120°	4200K	50000





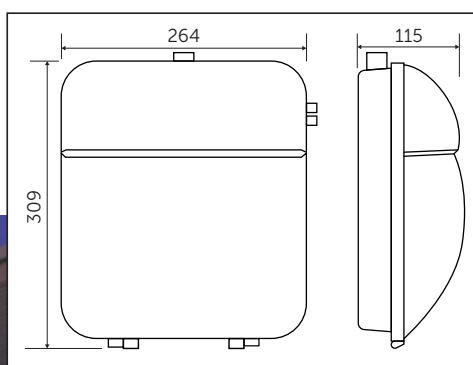
# SkylinePRO

## Technical Specification

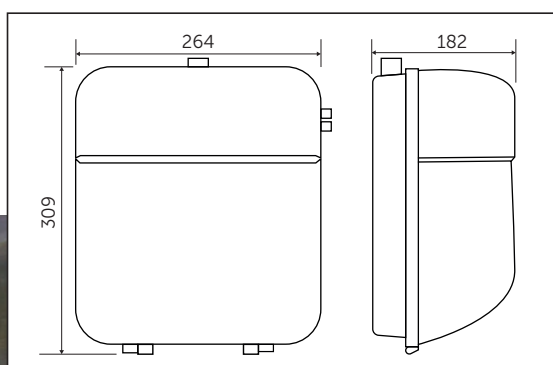
Data	
Construction	Die Cast Aluminium Base / PVC Cover
Driver	Meanwell 
LED Chip	Bridgelux
IP Rating	IP65
Operating Temp	-30°C to +35°C / Emergency version minimum temperature -5°C
Input Voltage	100 - 240V (Photocell and emergency versions 240V only)
Power Factor	> 0.9
CRI	85 - Exceeds EU standard of Ra 80 for Colour Rendering Index
LMR	80 - Exceeds EU standard of 70 for Lumens Maintenance Ratio
ECA Compliant	No

\* All BELL Lighting luminaires are rated L80 B10, so for a 50,000 hour product. L80B10 at 50,000 hours our fittings will still have 80% of initial lumen, only 10% of fittings will fail to achieve this.

**04425 Standard Version**  
**04428 Photocell Version 30W**



**04419 Emergency Version**  
**04417 Emergency/Photocell Version 30W**



<sup>1</sup> Exceeds EU standard of 70 for Lumens Maintenance Ratio  
<sup>2</sup> Exceeds EU standard of RA 80 for Colour Rendering Index  
<sup>3</sup> Subject to terms & conditions (Contact Customer Service)



# Strada

## LED Street Light

- Ideal for car parks and pedestrian walkways to ensure safe passage of visitors and staff
- Cool white
- Reduced light pollution
- Precision lens system directs light only where it is needed, reducing overspill
- Long life 50000 hours
- Aerodynamic design for reduced windage
- 60mm Side entry



Code	V	W	lm	Description	Temp	Hours
10750	100-264	30	3900	30W Strada LED Street Light - IP66, 4000K	4000K	50000
10751	100-264	50	6500	50W Strada LED Street Light - IP66, 4000K	4000K	50000
10752	100-264	70	9100	70W Strada LED Street Light - IP66, 4000K	4000K	50000

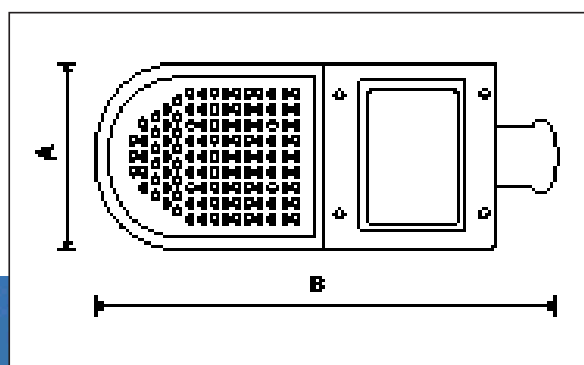




# Technical Specification

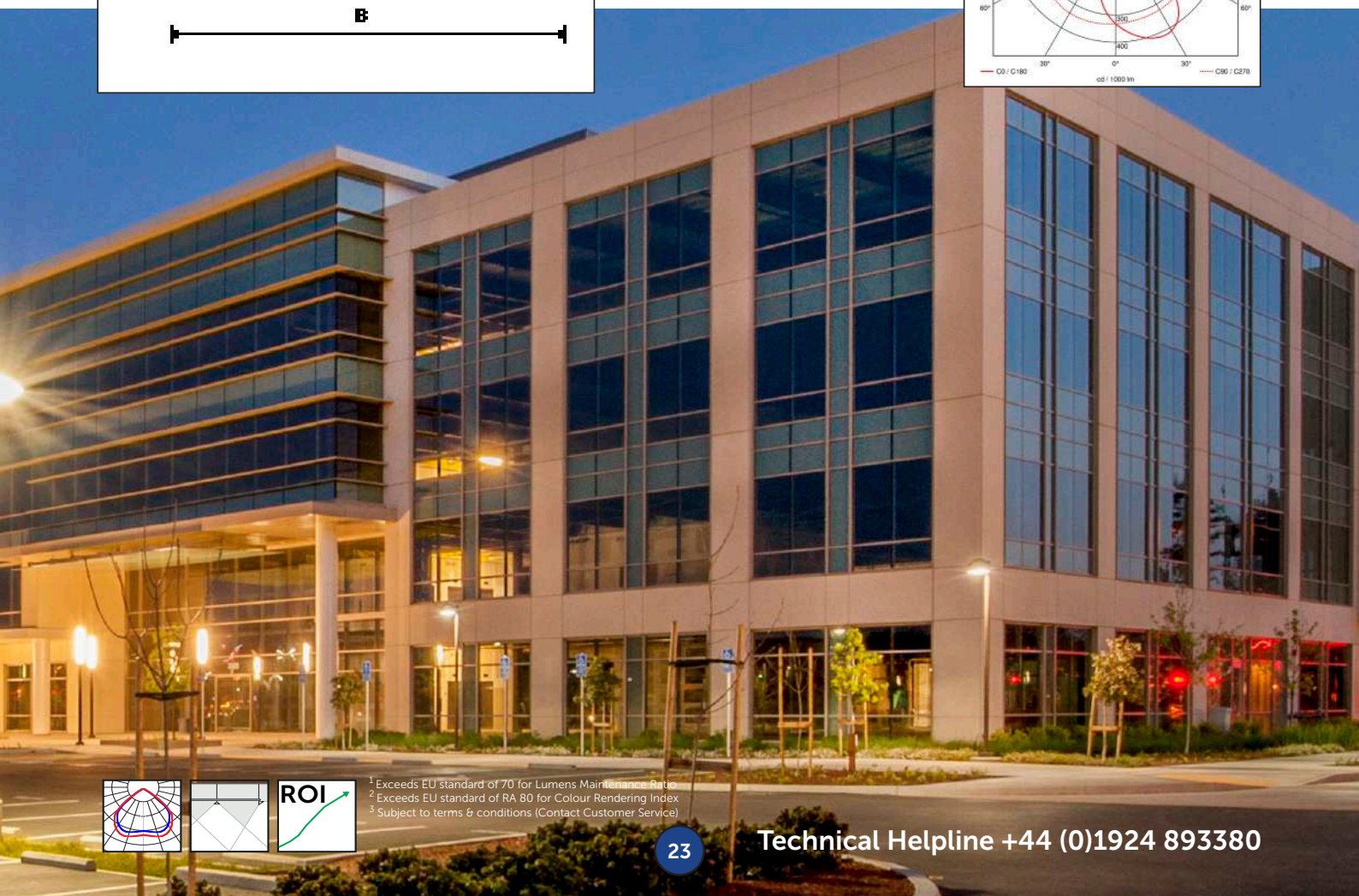
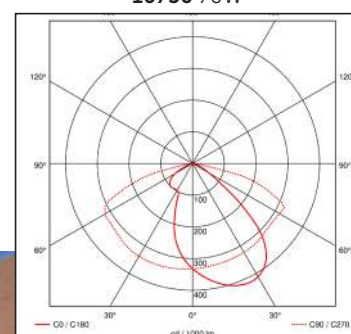
Data	
Construction	Die Cast Marine Grade Aluminium
Driver	BELL
LED Chip	Samsung
IP Rating	IP66
Operating Temp	-30°C to +35°C
Input Voltage	220-240V
Power Factor	> 0.9
CRI	85 - Exceeds EU standard of Ra 80 for Colour Rendering Index
LMR	80 - Exceeds EU standard of 70 for Lumens Maintenance Ratio
Windage	30W 0.07M <sup>2</sup> / 50W 0.07M <sup>2</sup> / 70W 0.095M <sup>2</sup>

\* All BELL Lighting luminaires are rated L80 B10, so for a 50,000 hour product. L80B10 at 50,000 hours our fittings will still have 80% of initial lumen, only 10% of fittings will fail to achieve this.



	30W	50W	70W
A	166mm	166mm	202mm
B	478mm	478mm	507mm
Depth	81mm	81mm	88mm

10750 70W



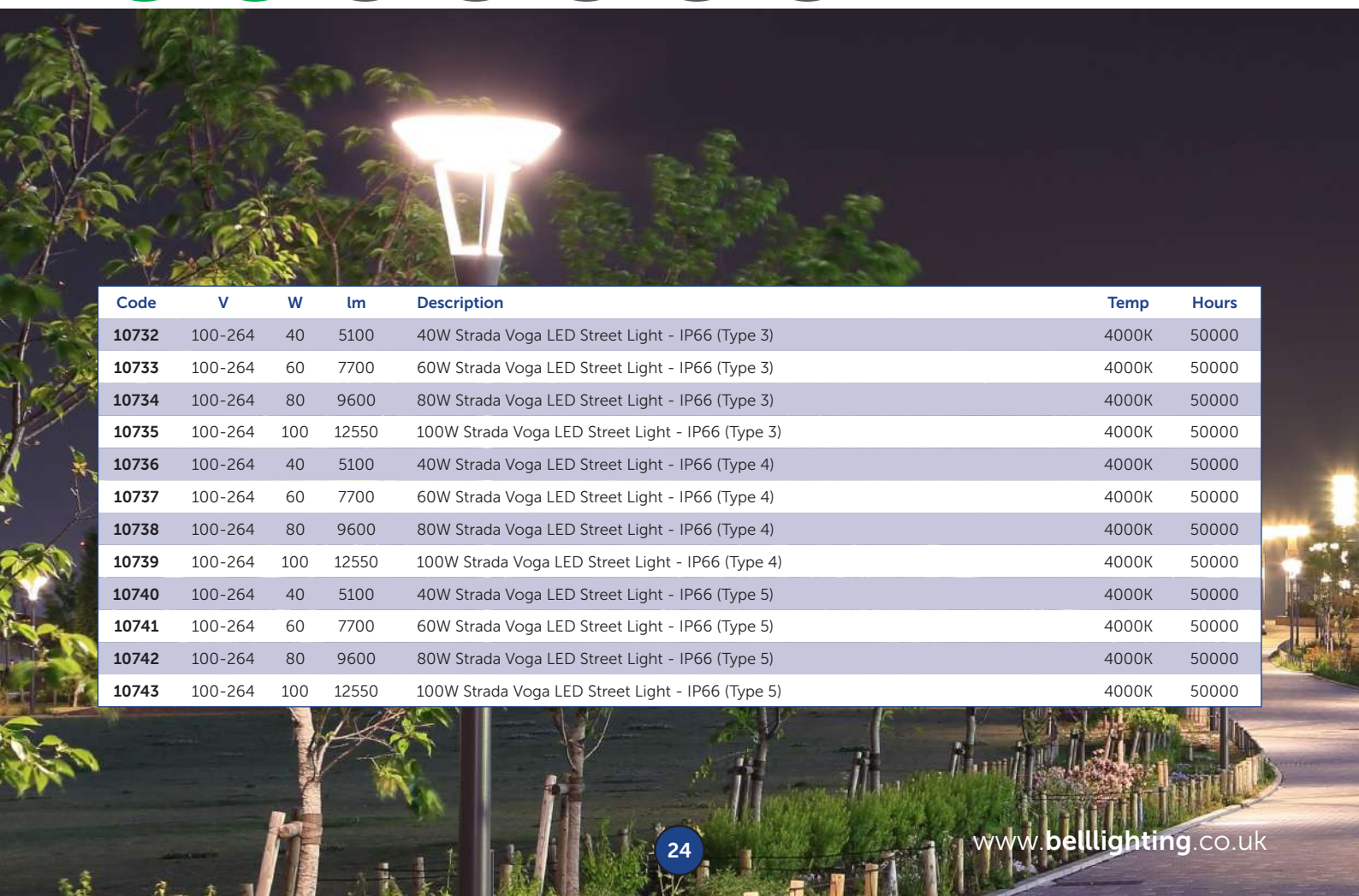
<sup>1</sup> Exceeds EU standard of 70 for Lumens Maintenance Ratio  
<sup>2</sup> Exceeds EU standard of RA 80 for Colour Rendering Index  
<sup>3</sup> Subject to terms & conditions (Contact Customer Service)



# Stradavoga

## LED Street Light

- Ideal for car parks and pedestrian walkways to ensure safe passage of visitors and staff
- Cool white
- Reduced light pollution
- Precision lens system directs light only where it is needed, reducing overspill
- Long life 50000 hours
- Aerodynamic design for reduced windage
- 60mm Post-Top entry



Code	V	W	lm	Description	Temp	Hours
10732	100-264	40	5100	40W Strada Voga LED Street Light - IP66 (Type 3)	4000K	50000
10733	100-264	60	7700	60W Strada Voga LED Street Light - IP66 (Type 3)	4000K	50000
10734	100-264	80	9600	80W Strada Voga LED Street Light - IP66 (Type 3)	4000K	50000
10735	100-264	100	12550	100W Strada Voga LED Street Light - IP66 (Type 3)	4000K	50000
10736	100-264	40	5100	40W Strada Voga LED Street Light - IP66 (Type 4)	4000K	50000
10737	100-264	60	7700	60W Strada Voga LED Street Light - IP66 (Type 4)	4000K	50000
10738	100-264	80	9600	80W Strada Voga LED Street Light - IP66 (Type 4)	4000K	50000
10739	100-264	100	12550	100W Strada Voga LED Street Light - IP66 (Type 4)	4000K	50000
10740	100-264	40	5100	40W Strada Voga LED Street Light - IP66 (Type 5)	4000K	50000
10741	100-264	60	7700	60W Strada Voga LED Street Light - IP66 (Type 5)	4000K	50000
10742	100-264	80	9600	80W Strada Voga LED Street Light - IP66 (Type 5)	4000K	50000
10743	100-264	100	12550	100W Strada Voga LED Street Light - IP66 (Type 5)	4000K	50000

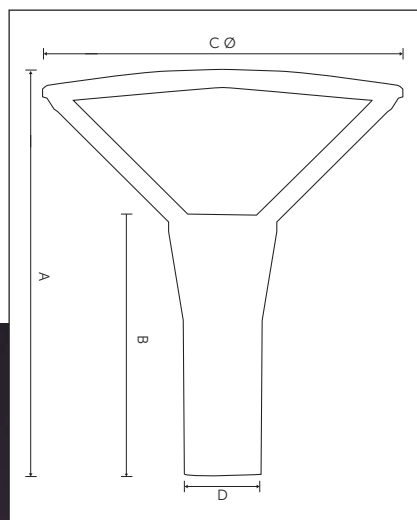


# Stradavoga

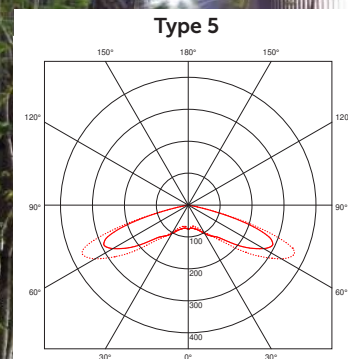
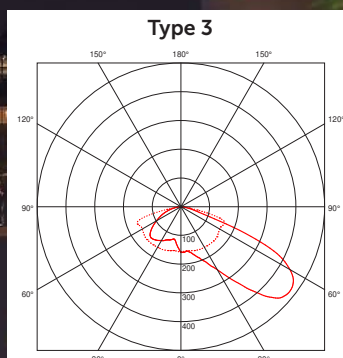
## Technical Specification

Data	
Construction	Die-cast Aluminium
Driver	Sosan
LED Chip	Philips
IP Rating	IP66
Operating Temp	-30°C to +35°C
Input Voltage	220-240V
Power Factor	> 0.9
CRI	85 - Exceeds EU standard of Ra 80 for Colour Rendering Index
LMR	80 - Exceeds EU standard of 70 for Lumens Maintenance Ratio

\* All BELL Lighting luminaires are rated L80 B10, so for a 50,000 hour product. L80B10 at 50,000 hours our fittings will still have 80% of initial lumen, only 10% of fittings will fail to achieve this.



	40W	60W	80W	100W
A	526mm	526mm	526mm	526mm
B	340mm	340mm	340mm	340mm
C Ø	450mm	450mm	450mm	450mm
D	89mm	89mm	89mm	89mm



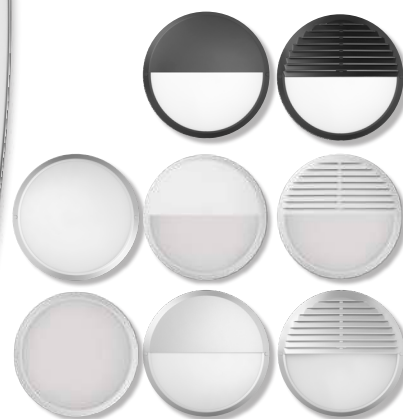
<sup>1</sup> Exceeds EU standard of 70 for Lumens Maintenance Ratio  
<sup>2</sup> Exceeds EU standard of 80 for Colour Rendering Index  
<sup>3</sup> Subject to terms & conditions (Contact Customer Service)



# Oberon

## IP65 LED Bulkhead

- Anti-corrosive polycarbonate body
- Standard / Emergency Version / Microwave Version
- Emergency Microwave Version
- 1800 Lumens
- Supplied with black bezel
- No maintenance / lamp replacement
- 8M Detection range on sensor versions
- Cool White 4000K
- 7 Year Guarantee (Excluding Battery)<sup>3</sup>
- 50000 Hours
- Suitable for BESA box mounting



Easy Fit bezel accessories

Emergency versions must be tested in line with the requirements of BS5266, failure to do so may effect battery life and warranty.

Code	V	W	Temp	lm	Description	Hours
10600	240	20	4000K	1800	Oberon LED Bulkhead - 4000K, supplied with black bezel	50000
10601	240	20	4000K	1800	Oberon LED Bulkhead Emergency - 4000K, supplied with black bezel	50000
10602	240	20	4000K	1800	Oberon LED Bulkhead M/W Sensor - 4000K, supplied with black bezel	50000
10603	240	20	4000K	1800	Oberon LED Bulkhead Emergency M/W Sensor - 4000K, supplied with black bezel	50000
10607	-	-	-	-	White Bezel for Oberon LED Bulkhead, (optional accessory)	-
10608	-	-	-	-	Silver Bezel for Oberon LED Bulkhead, (optional accessory)	-
10609	-	-	-	-	Black Eyelid for Oberon LED Bulkhead, (optional accessory)	-
10610	-	-	-	-	White Eyelid for Oberon LED Bulkhead, (optional accessory)	-
10611	-	-	-	-	Silver Eyelid for Oberon LED Bulkhead, (optional accessory)	-
10612	-	-	-	-	Black Louvre for Oberon LED Bulkhead, (optional accessory)	-
10613	-	-	-	-	White Louvre for Oberon LED Bulkhead, (optional accessory)	-
10614	-	-	-	-	Silver Louvre for Oberon LED Bulkhead, (optional accessory)	-

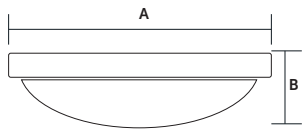
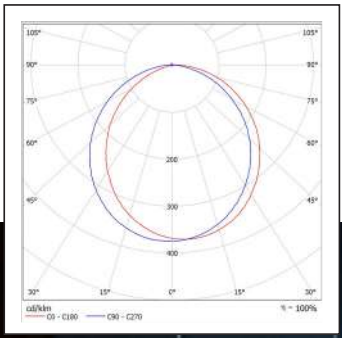


# Technical Specification

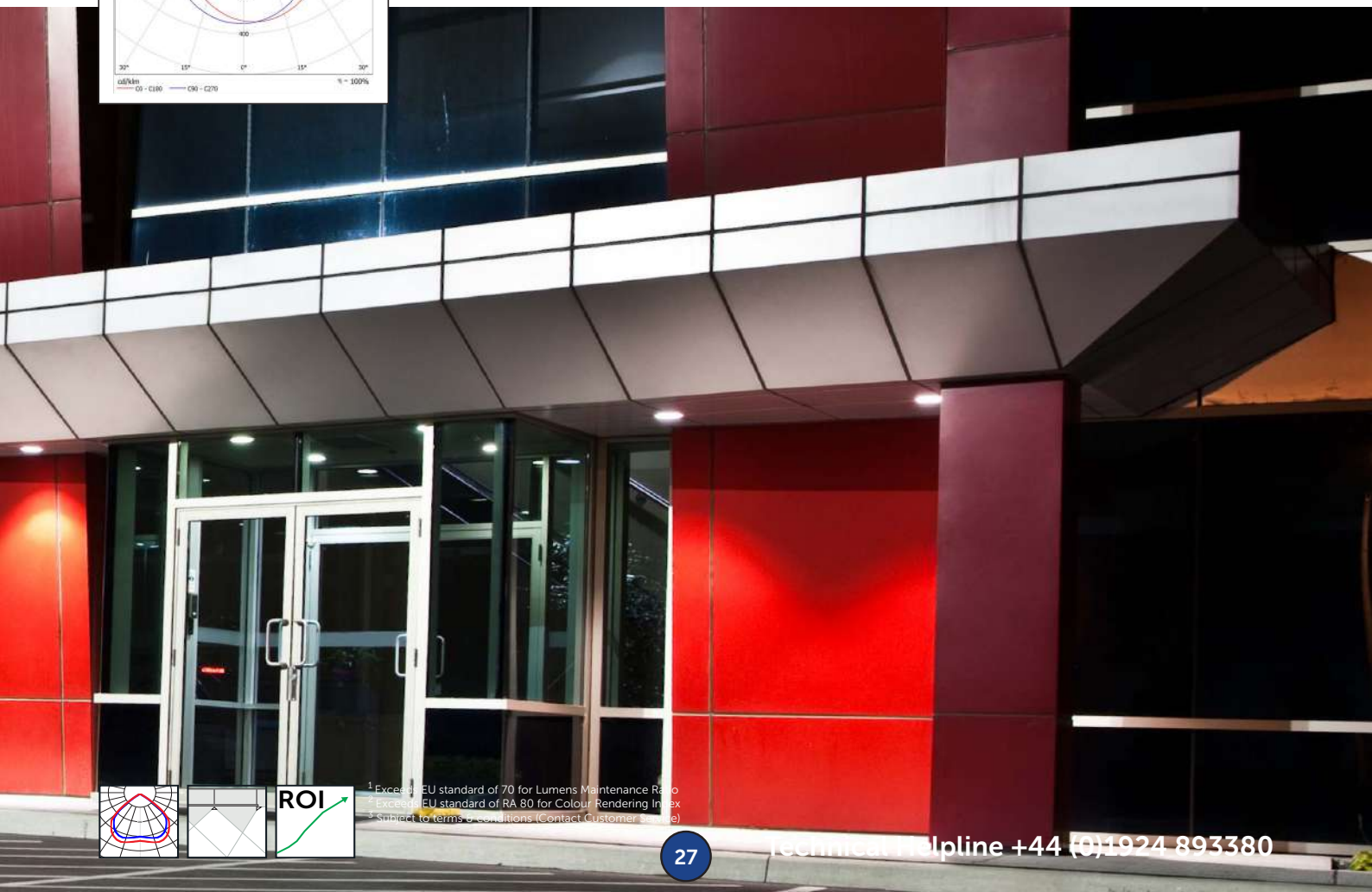
Data	
Construction	Polycarbonate
Driver	BELL
LED Chip	Samsung
IP Rating	IP65
Operating Temp	-20°C to +35°C
Input Voltage	220 - 240V
Power Factor	> 0.9
CRI	85 - Exceeds EU standard of Ra 80 for Colour Rendering Index
LMR	80 - Exceeds EU standard of 70 for Lumens Maintenance Ratio
L1A / L1B / L2A / L2B Compliant	Yes

\* All BELL Lighting luminaires are rated L80 B10, so for a 50,000 hour product. L80B10 at 50,000 hours our fittings will still have 80% of initial lumen, only 10% of fittings will fail to achieve this.

10600 20W



Model	A Ø	B Depth
20W	300mm	70mm



<sup>1</sup> Exceeds EU standard of 70 for Lumens Maintenance Ratio  
<sup>2</sup> Exceeds EU standard of RA 80 for Colour Rendering Index  
<sup>3</sup> Subject to terms & conditions (Contact Customer Service)



# LED Integrated Anti Corrosive Batten

- The Smart Replacement for Single/Twin Fluorescent T8 and T5 Fixtures
- Injection moulded polycarbonate body - suitable for food environments
- Special high light transmission frosted polycarbonate diffuser for smooth uniform lighting
- Stainless steel clips
- Stainless steel suspension brackets
- Shatterproof
- IP65
- 7 year guarantee (Excluding Battery)<sup>3</sup>



## Corridor Dim versions supplied complete with infra-red remote control.

Quick and easy adjustment for multiple fittings; dimming level, presence detection, light levels & automatic on-off time. Average 4M range.



Emergency versions must be tested in line with the requirements of BS5266, failure to do so may effect battery life and warranty.

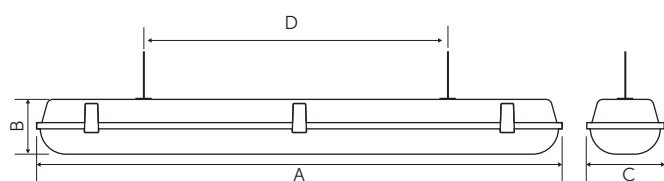
Code	W	Description	lm	Temp	Hours
10257	10	Dura Anti Corrosive Batten - Single 600mm (2ft)	1200	4000	50000
10256	20	Dura Anti Corrosive Batten - Double 600mm (2ft)	2400	4000	50000
10255	20	Dura Anti Corrosive Batten - Double Emergency 600mm (2ft)	2400	4000	50000
06722	20	Dura Anti Corrosive Batten - Single 1200mm (4ft)	2400	4000	50000
06723	20	Dura Anti Corrosive Batten - Single Emergency 1200mm (4ft)	2400	4000	50000
06728	40	Dura Anti Corrosive Batten - Double 1200mm (4ft)	4600	4000	50000
06729	40	Dura Anti Corrosive Batten - Double Emergency 1200mm (4ft)	4600	4000	50000
06710	25	Dura Anti Corrosive Batten - Single 1500mm (5ft)	3000	4000	50000
06711	25	Dura Anti Corrosive Batten - Single Emergency 1500mm (5ft)	3000	4000	50000
06712	25	Dura Anti Corrosive Batten - Single with Microwave Sensor + Corridor Dim Function 1500mm (5ft)	3000	4000	50000
06713	25	Dura Anti Corrosive Batten - Single Emergency with Microwave Sensor + Corridor Dim Function 1500mm (5ft)	3000	4000	50000
06714	25	Dura Anti Corrosive Batten - Single with Microwave Sensor 1500mm (5ft)	3000	4000	50000
06715	25	Dura Anti Corrosive Batten - Single Emergency with Microwave Sensor 1500mm (5ft)	3000	4000	50000
06716	52	Dura Anti Corrosive Batten - Double 1500mm (5ft)	6000	4000	50000
06717	52	Dura Anti Corrosive Batten - Double Emergency 1500mm (5ft)	6000	4000	50000
06718	52	Dura Anti Corrosive Batten - Double with Microwave Sensor + Corridor Dim Function 1500mm (5ft)	6000	4000	50000
06719	52	Dura Anti Corrosive Batten - Double Emergency / Microwave Sensor + Corridor Dim Function 1500mm (5ft)	6000	4000	50000
06720	52	Dura Anti Corrosive Batten - Double with Microwave Sensor 1500mm (5ft)	6000	4000	50000
06721	52	Dura Anti Corrosive Batten - Emergency with Microwave Sensor 1500mm (5ft)	6000	4000	50000
06760	28	Dura Anti Corrosive Batten - Single 1800mm (6ft)	3360	4000	50000
06761	28	Dura Anti Corrosive Batten - Single Emergency 1800mm (6ft)	3360	4000	50000
06766	60	Dura Anti Corrosive Batten - Double 1800mm (6ft)	6900	4000	50000
06767	60	Dura Anti Corrosive Batten - Double Emergency 1800mm (6ft)	6900	4000	50000



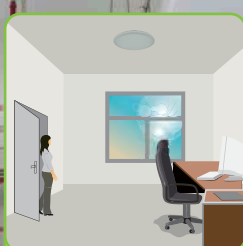
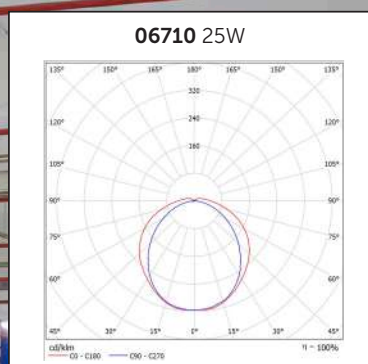
# Technical Specification

Data	
Construction	Polycarbonate Body & lens
Driver	BELL
LED Chip	Samsung
IP Rating	IP65
Operating Temp	-30°C to +35°C / Emergency version minimum temperature -5°C
Input Voltage	220 - 240V
Power Factor	> 0.9
CRI	85 - Exceeds EU standard of Ra 80 for Colour Rendering Index
LMR	80 - Exceeds EU standard of 70 for Lumens Maintenance Ratio
ECA Compliant	Yes
L1A / L1B / L2A / L2B Compliant	Yes

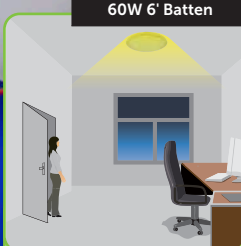
\* All BELL Lighting luminaires are rated L80 B10, so for a 50,000 hour product. L80B10 at 50,000 hours our fittings will still have 80% of initial lumen, only 10% of fittings will fail to achieve this.



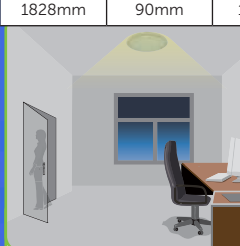
	A	B	C	D
10W 2' Batten	654mm	90mm	90mm	390-430mm
20W 2' Batten	654mm	90mm	125mm	390-430mm
20W 4' Batten	1263mm	90mm	90mm	900-955mm
40W 4' Batten	1263mm	90mm	125mm	900-955mm
25W 5' Batten	1530mm	90mm	90mm	1000-1055mm
52W 5' Batten	1530mm	90mm	125mm	1000-1055mm
28W 6' Batten	1828mm	90mm	90mm	1000-1055mm
60W 6' Batten	1828mm	90mm	125mm	1000-1055mm



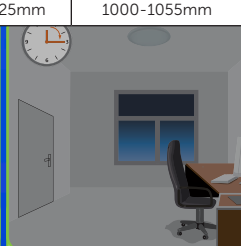
With sufficient natural light, the light does not switch on when presence is detected.



With insufficient natural light, the sensor switches on automatically when someone enters the room.



When the room is empty, light dims to stand-by level (10% / 20% / 30%) after the hold-time.



Light switched off automatically after the stand-by period has elapsed.

## Tri-Level Control (Corridor Function)

Offers 3 levels of light: 100%-dimmed light (10%, 20%, 30%)-off; and 2 periods of selectable waiting time: motion hold-time and stand-by period; selectable daylight threshold and choice of detection area.



<sup>1</sup> Exceeds EU standard of 70 for Lumens Maintenance Ratio  
<sup>2</sup> Exceeds EU standard of RA 80 for Colour Rendering Index  
<sup>3</sup> Subject to terms & conditions (Contact Customer Service)



## LED Integrated Batten

- The smart replacement for Single/Twin Fluorescent T8 and T5 Fixtures
- Special high light transmission frosted polycarbonate diffuser for smooth uniform lighting
- Perfect for all commercial environments
- Cool white
- Integrated controls
- Shatterproof
- Suitable for BESA Box mounting
- 8M detection range on corridor dim option
- 7 year guarantee (Excluding Battery)<sup>3</sup>

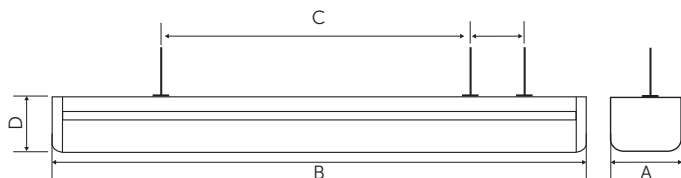


Emergency versions must be tested in line with the requirements of BS5266, failure to do so may effect battery life and warranty.

## Technical Specification

Data	
Construction	Steel Body, Polycarbonate lens
Driver	BELL
LED Chip	Samsung
IP Rating	IP20
Operating Temp	-30°C to +35°C / Emergency version minimum temperature -5°C
Input Voltage	220 - 240V
Power Factor	> 0.9
CRI	85 - Exceeds EU standard of Ra 80 for Colour Rendering Index
LMR	80 - Exceeds EU standard of 70 for Lumens Maintenance Ratio
ECA Compliant	Yes
L1A / L1B / L2A / L2B Compliant	Yes

\* All BELL Lighting luminaires are rated L80 B10, so for a 50,000 hour product. L80B10 at 50,000 hours our fittings will still have 80% of initial lumen, only 10% of fittings will fail to achieve this.



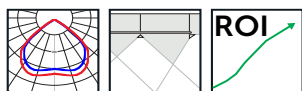
Model	A	B	C (From Centre)	D
20W	69mm	1230mm	290mm / 170mm / 320mm	82mm
40W	109mm	1230mm	290mm / 170mm / 320mm	82mm
30W	69mm	1530mm	290mm / 170mm / 320mm	82mm
60W	109mm	1530mm	290mm / 170mm / 320mm	82mm
50W	69mm	1795mm	415mm / 170mm / 320mm	82mm
80W	109mm	1795mm	415mm / 170mm / 320mm	82mm



**Corridor Dim versions supplied complete with infra-red remote control.**

Quick and easy adjustment for multiple fittings; dimming level, presence detection, light levels & automatic on-off time.

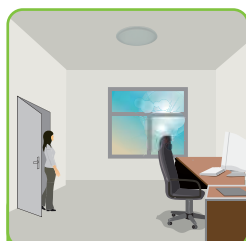
Average 4M range.



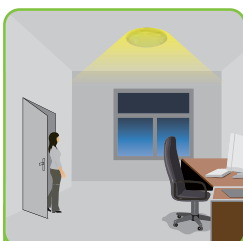
<sup>1</sup> Exceeds EU standard of 70 for Lumens Maintenance Ratio  
<sup>2</sup> Exceeds EU standard of RA 80 for Colour Rendering Index  
<sup>3</sup> Subject to terms & conditions (Contact Customer Service)



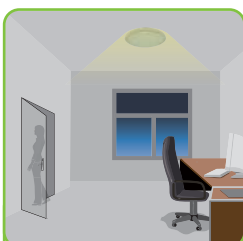
Code	W	Description	Temp	lm	Hrs
10200	20	Ultra LED Integrated - 4000K, Single 1230mm (4ft)	4000	2500	50000
10202	20	Ultra LED Integrated - 4000K, Single with Microwave Sensor 1230mm (4ft)	4000	2500	50000
10204	20	Ultra LED Integrated - 4000K, Single with Microwave Sensor + Corridor Dim Function 1230mm (4ft)	4000	2500	50000
10201	20	Ultra LED Integrated - 4000K, Single Emergency 1230mm (4ft)	4000	2500	50000
10203	20	Ultra LED Integrated - 4000K, Single Emergency with Microwave Sensor 1230mm (4ft)	4000	2500	50000
10205	20	Ultra LED Integrated - 4000K, Single Emergency with Microwave Sensor + Corridor Dim Function 1230mm (4ft)	4000	2500	50000
10206	40	Ultra LED Integrated - 4000K, Double 1230mm (4ft)	4000	5000	50000
10208	40	Ultra LED Integrated - 4000K, Double with Microwave Sensor 1230mm (4ft)	4000	5000	50000
10210	40	Ultra LED Integrated - 4000K, Double with Microwave Sensor + Corridor Dim Function 1230mm (4ft)	4000	5000	50000
10207	40	Ultra LED Integrated - 4000K, Double Emergency 1230mm (4ft)	4000	5000	50000
10209	40	Ultra LED Integrated - 4000K, Double Emergency with Microwave Sensor 1230mm (4ft)	4000	5000	50000
10211	40	Ultra LED Integrated - 4000K, Double Emergency with Microwave Sensor + Corridor Dim Function 1230mm (4ft)	4000	5000	50000
10212	30	Ultra LED Integrated - 4000K, Single 1530mm (5ft)	4000	3700	50000
10214	30	Ultra LED Integrated - 4000K, Single with Microwave Sensor 1530mm (5ft)	4000	3700	50000
10216	30	Ultra LED Integrated - 4000K, Single with Microwave Sensor + Corridor Dim Function 1530mm (5ft)	4000	3700	50000
10213	30	Ultra LED Integrated - 4000K, Single Emergency 1530mm (5ft)	4000	3700	50000
10215	30	Ultra LED Integrated - 4000K, Single Emergency with Microwave Sensor 1530mm (5ft)	4000	3700	50000
10217	30	Ultra LED Integrated - 4000K, Single Emergency with Microwave Sensor + Corridor Dim Function 1530mm (5ft)	4000	3700	50000
10218	60	Ultra LED Integrated - 4000K, Double 1530mm (5ft)	4000	7300	50000
10220	60	Ultra LED Integrated - 4000K, Double with Microwave Sensor 1530mm (5ft)	4000	7300	50000
10222	60	Ultra LED Integrated - 4000K, Double with Microwave Sensor + Corridor Dim Function 1530mm (5ft)	4000	7300	50000
10219	60	Ultra LED Integrated - 4000K, Double Emergency 1530mm (5ft)	4000	7300	50000
10221	60	Ultra LED Integrated - 4000K, Double Emergency with Microwave Sensor 1530mm (5ft)	4000	7300	50000
10223	60	Ultra LED Integrated - 4000K, Double Emergency with Microwave Sensor + Corridor Dim Function 1530mm (5ft)	4000	7300	50000
10224	50	Ultra LED Integrated - 4000K, Single 1795mm (6ft)	4000	6000	50000
10226	50	Ultra LED Integrated - 4000K, Single with Microwave Sensor 1795mm (6ft)	4000	6000	50000
10228	50	Ultra LED Integrated - 4000K, Single with Microwave Sensor + Corridor Dim Function 1795mm (6ft)	4000	6000	50000
10225	50	Ultra LED Integrated - 4000K, Single Emergency 1795mm (6ft)	4000	6000	50000
10227	50	Ultra LED Integrated - 4000K, Single Emergency with Microwave Sensor 1795mm (6ft)	4000	6000	50000
10229	50	Ultra LED Integrated - 4000K, Single Emergency with Microwave Sensor + Corridor Dim Function 1795mm (6ft)	4000	6000	50000
10230	80	Ultra LED Integrated - 4000K, Double 1795mm (6ft)	4000	9500	50000
10232	80	Ultra LED Integrated - 4000K, Double with Microwave Sensor 1795mm (6ft)	4000	9500	50000
10234	80	Ultra LED Integrated - 4000K, Double with Microwave Sensor + Corridor Dim Function 1795mm (6ft)	4000	9500	50000
10231	80	Ultra LED Integrated - 4000K, Double Emergency 1795mm (6ft)	4000	9500	50000
10233	80	Ultra LED Integrated - 4000K, Double Emergency with Microwave Sensor 1795mm (6ft)	4000	9500	50000
10235	80	Ultra LED Integrated - 4000K, Double Emergency with Microwave Sensor + Corridor Dim Function 1795mm (6ft)	4000	9500	50000



With sufficient natural light, the light does not switch on when presence is detected.



With insufficient natural light, the sensor switches on automatically when someone enters the room.



When the room is empty, light dims to stand-by level (10% / 20% / 30%) after the hold-time.



Light switched off automatically after the stand-by period has elapsed.

### Tri-Level Control (Corridor Function)

Offers 3 levels of light: 100%-dimmed light (10%, 20%, 30%)-off; and 2 periods of selectable waiting time: motion hold-time and stand-by period; selectable daylight threshold and choice of detection area.



# ArialPRO

## LED Downlight

- Ideal for home and office environments
- Equivalent up to 2x26W fluorescent
- Anti glare
- Tridonic Driver <sup>4</sup>
- Tool Free - Plug & Play
- Emergency downlights with 5 year battery guarantee available



### Includes Quick Fix Connector - Plug & Play Fitting

Tool-Free loop in / loop out terminals. Quick release connector for ease of insulation resistance testing.



9W	≡	18W	Energy Saving	50%
12W	≡	26W	Energy Saving	53%
21W	≡	52W	Energy Saving	60%



Code	W	Description	Lm	Temp	Hours
10580	9	Arial Pro LED Integrated Fixed Downlight, 4000K	850	4000K	50000
10581	12	Arial Pro LED Integrated Fixed Downlight, 4000K	1180	4000K	50000
10582	21	Arial Pro LED Integrated Fixed Downlight, 4000K	1850	4000K	50000
10590	9	Arial Pro LED Integrated Fixed Downlight, 4000K - Emergency	850	4000K	50000
10591	12	Arial Pro LED Integrated Fixed Downlight, 4000K - Emergency	1180	4000K	50000
10592	21	Arial Pro LED Integrated Fixed Downlight, 4000K - Emergency	1850	4000K	50000
10593	9	Arial Pro LED Integrated Fixed Downlight, 4000K - 0-10V Dim	850	4000K	50000
10594	12	Arial Pro LED Integrated Fixed Downlight, 4000K - 0-10V Dim	1180	4000K	50000
10595	21	Arial Pro LED Integrated Fixed Downlight, 4000K - 0-10V Dim	1850	4000K	50000
10586	9	Arial Pro LED Integrated Fixed Downlight, 4000K - Dali Dim	850	4000K	50000
10587	12	Arial Pro LED Integrated Fixed Downlight, 4000K - Dali Dim	1180	4000K	50000
10588	21	Arial Pro LED Integrated Fixed Downlight, 4000K - Dali Dim	1850	4000K	50000

#### Available on request:

- Emergency panels with 5 year battery guarantee
- Emergency 0-10v Dim
- Emergency Dali Dim

For further information call 01924 893380 or email [sales@belllighting.co.uk](mailto:sales@belllighting.co.uk)

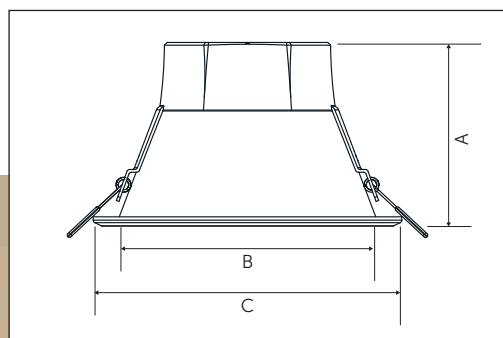
Emergency versions must be tested in line with the requirements of BS5266, failure to do so may effect battery life and warranty.



# Technical Specification

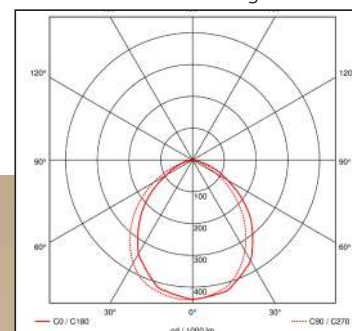
Data	
Construction	Polycarbonate
Driver	Tridonic
LED Chip	Philips
IP Rating	IP43
Operating Temp	-5°C to +35°C
Input Voltage	220 - 240V
Power Factor	> 0.9
CRI	85 - Exceeds EU standard of Ra 80 for Colour Rendering Index
LMR	80 - Exceeds EU standard of 70 for Lumens Maintenance Ratio
L1A / L1B / L2A / L2B Compliant	No
Emergency Battery Type	NiCd

\* All BELL Lighting luminaires are rated L80 B10, so for a 50,000 hour product. L80B10 at 50,000 hours our fittings will still have 80% of initial lumen, only 10% of fittings will fail to achieve this.



	9W	12W	21W
A	88mm	100mm	110mm
B	99mm	142mm	193mm
C	117mm	167mm	217mm
Cut-Out	105mm	150mm	200mm

9W LED Downlight

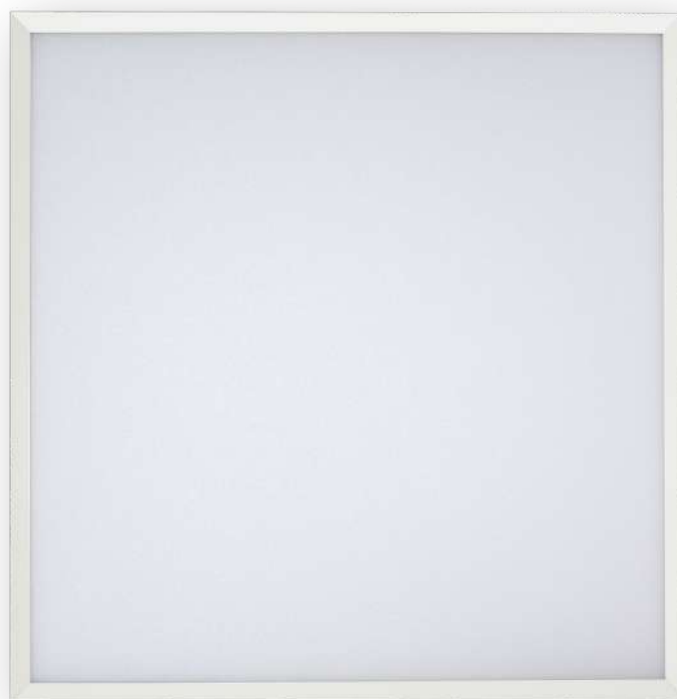


<sup>1</sup> Exceeds EU standard of 70 for Lumens Maintenance Ratio  
<sup>2</sup> Exceeds EU standard of Ra 80 for Colour Rendering Index  
<sup>3</sup> Subject to terms & conditions (Contact Customer Service)



## LED Panel

- Professional LED Panel
- 0-10V Dimming or DALI Dimming options available
- Surface, Suspended or Flush Mounting options available
- White finish
- Anti-twist frame
- Innovative fixed connector
- Emergency panels with 5 year battery guarantee available



## Technical Specification

Data	
Construction	Aluminium + PMMA
Driver	BELL
LED Chip	Philips
IP Rating	IP20
Operating Temp	0°C to +35°C
Input Voltage	220 - 240V
Power Factor	> 0.9
CRI	85 - Exceeds EU standard of Ra 80 for Colour Rendering Index
LMR	80 - Exceeds EU standard of 70 for Lumens Maintenance Ratio
ECA Compliant	Yes
L1A / L1B / L2A / L2B Compliant	Yes
Emergency Battery Type	NiCd

\* All BELL Lighting luminaires are rated L80 B10, so for a 50,000 hour product. L80B10 at 50,000 hours our fittings will still have 80% of initial lumen, only 10% of fittings will fail to achieve this.

Emergency versions must be tested in line with the requirements of BS5266, failure to do so may effect battery life and warranty.



Code	W	Description	lm/W	lm	Temp	Finish	Hours
<b>600 x 600 LED Panels</b>							
09948	36	36W 600 x 600 LED Panel	105	4000	2700K	White	50000
09949	36	36W 600 x 600 LED Panel	105	4000	4000K	White	50000
09950	36	36W 600 x 600 LED Panel	105	4000	6000K	White	50000
10090	36	36W 600 x 600 LED Panel Emergency	105	4000	2700K	White	50000
10091	36	36W 600 x 600 LED Panel Emergency	105	4000	4000K	White	50000
10092	36	36W 600 x 600 LED Panel Emergency	105	4000	6000K	White	50000
10006	36	36W 600 x 600 LED Panel, 0-10v Dim	105	4000	2700K	White	50000
10007	36	36W 600 x 600 LED Panel, 0-10v Dim	105	4000	4000K	White	50000
10008	36	36W 600 x 600 LED Panel, 0-10v Dim	105	4000	6000K	White	50000
09960	36	36W 600 x 600 LED Panel, Dali Dim	105	4000	2700K	White	50000
09961	36	36W 600 x 600 LED Panel, Dali Dim	105	4000	4000K	White	50000
09962	36	36W 600 x 600 LED Panel, Dali Dim	105	4000	6000K	White	50000
<b>1200 x 300 LED Panels</b>							
09990	36	1200 x 300 LED Panel	105	4000	4000K	White	50000
10100	36	1200 x 300 LED Panel Emergency	105	4000	4000K	White	50000
10014	36	1200 x 300 LED Panel, 0-10v Dim	105	4000	4000K	White	50000
09992	36	1200 x 300 LED Panel, Dali Dim	105	4000	4000K	White	50000
<b>1200 x 600 LED Panels</b>							
09994	50	1200 x 600 LED Panel	120	6000	4000K	White	50000
09995	50	1200 x 600 LED Panel Emergency	120	6000	4000K	White	50000
09996	50	1200 x 600 LED Panel, 0-10v Dim	120	6000	4000K	White	50000
09997	50	1200 x 600 LED Panel, Dali Dim	120	6000	4000K	White	50000
<b>Optional Extras</b>							
09980	-	600 x 600 Surface Mounting Unit for Standard LED Panels, exc emergency		-	-	White	-
09981	-	1200 x 300 Surface Mounting Unit for Standard LED Panels, exc emergency		-	-	White	-
09982	-	1200 x 600 Surface Mounting Unit for Standard LED Panels, exc emergency		-	-	White	-
09983	-	Hanging Suspension Kit for 600 x 600mm & 600 x 1200 LED Panels		-	-	-	-
09984	-	Hanging Suspension Kit for 1200 x 300mm LED Panel		-	-	-	-
09985	-	Flush Mounting Kit for LED panels		-	-	-	-
<b>Available on request:</b> <ul style="list-style-type: none"> <li>• 600x600mm also available in 25W</li> <li>• Emergency panels with 5 year battery guarantee</li> <li>• Emergency 0-10v Dim</li> <li>• Emergency Dali Dim</li> <li>• Emergency Surface Mount</li> </ul>							
For further information call 01924 893380 or email sales@belllighting.co.uk							

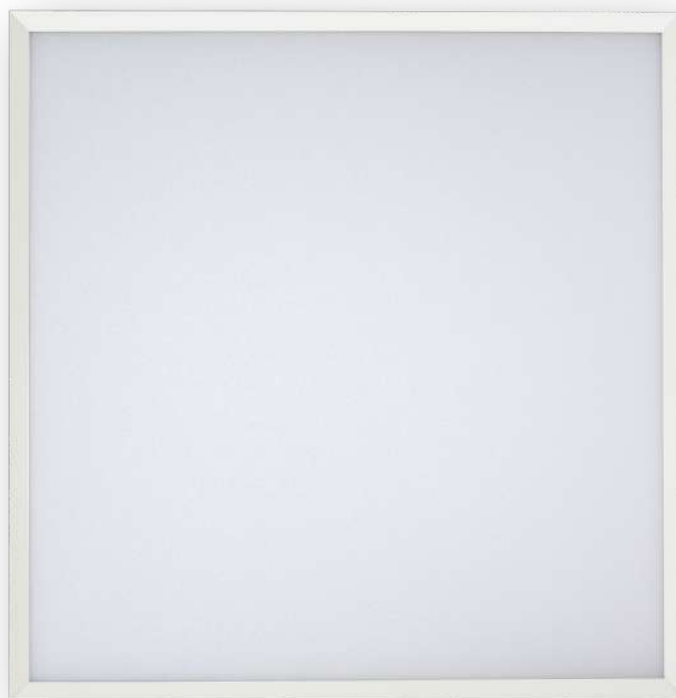


<sup>1</sup> Exceeds EU standard of 70 for Lumens Maintenance Ratio  
<sup>2</sup> Exceeds EU standard of RA 80 for Colour Rendering Index  
<sup>3</sup> Subject to terms & conditions (Contact Customer Service)



## UGR <19 LED Panel

- Professional LED Panel
- 0-10V Dimming or DALI Dimming options available
- Surface mount option
- BELL Driver
- White frame
- UGR <19 any room size
- Anti-twist frame
- Emergency panels with 5 year battery guarantee available



## Technical Specification

Data	
Construction	Aluminium + PMMA
Driver	BELL
LED Chip	Philips
IP Rating	IP20
Operating Temp	0°C to +35°C
Input Voltage	220 - 240V
Power Factor	> 0.9
CRI	85 - Exceeds EU standard of Ra 80 for Colour Rendering Index
LMR	80 - Exceeds EU standard of 70 for Lumens Maintenance Ratio
ECA Compliant	Yes
L1A / L1B / L2A / L2B Compliant	Yes
Emergency Battery Type	NiCd

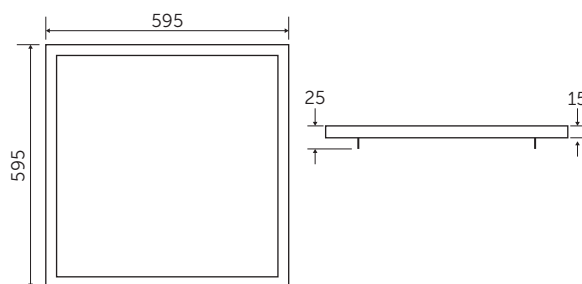
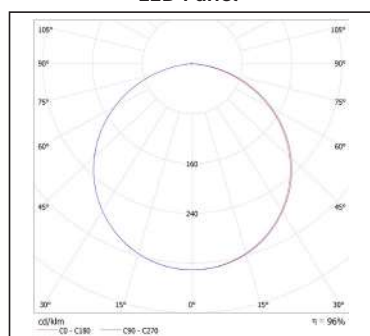
\* All BELL Lighting luminaires are rated L80 B10, so for a 50,000 hour product. L80B10 at 50,000 hours our fittings will still have 80% of initial lumen, only 10% of fittings will fail to achieve this.

Emergency versions must be tested in line with the requirements of BS5266, failure to do so may effect battery life and warranty.



Code	W	Description	lm/W	lm	Temp	Finish	Hours
10040	36	36W 600 x 600 UGR <19 LED Panel	105	4000	4000K	White	50000
10093	36	36W 600 x 600 UGR <19 LED Panel Emergency	105	4000	4000K	White	50000
10043	36	36W 600 x 600 UGR <19 LED Panel 0-10V Dim	105	4000	4000K	White	50000
10042	36	36W 600 x 600 UGR <19 LED Panel Dali Dim	105	4000	4000K	White	50000
<b>Optional Extras</b>							
09980	-	600 x 600 Surface Mounting Unit for LED Panels, exc emergency	-	-	-	-	-
09983	-	Hanging Suspension Kit for 600 x 600mm & 600 x 1200 LED Panels	-	-	-	-	-
09985	-	Flush Mounting Kit for LED panels	-	-	-	-	-
<b>Available on request:</b> <ul style="list-style-type: none"> <li>• 600x600mm also available in 25W</li> <li>• Emergency panels with 5 year battery guarantee</li> <li>• Emergency 0-10v Dim</li> <li>• Emergency Dali Dim</li> <li>• Emergency Surface Mount</li> </ul>							
For further information call 01924 893380 or email <a href="mailto:sales@belllighting.co.uk">sales@belllighting.co.uk</a>							

### LED Panel



**UGR** (Unified Glare Rating) is a method of calculating glare from light sources.

The UGR rating helps to determine how likely a light source is to cause discomfort to those around it. This classification ranges from 5 to 40, with low numbers indicating low glare.

Glare can be a common problem in workplaces. Inappropriate lighting or excessive brightness can be bounced off reflective surfaces, such as computer screens, whiteboards etc. This can cause disruption for the occupants of offices.

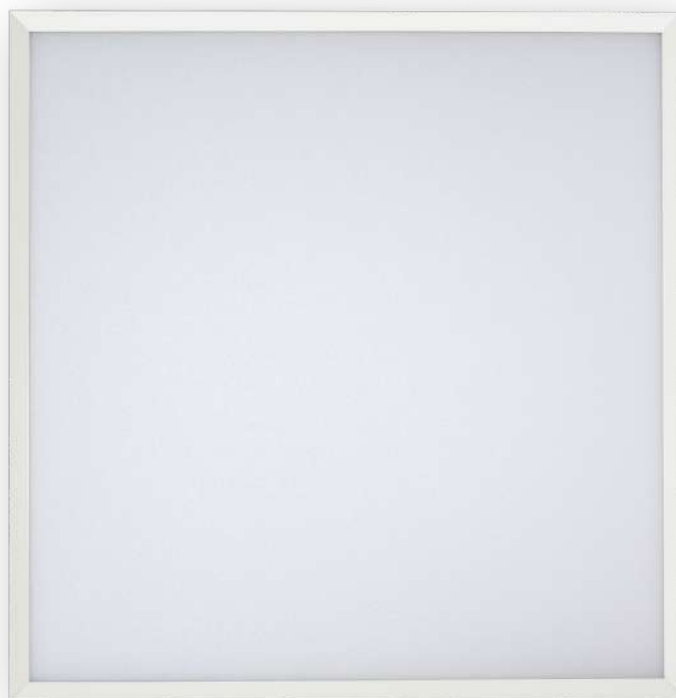


<sup>1</sup> Exceeds EU standard of 70 for Lumens Maintenance Ratio  
<sup>2</sup> Exceeds EU standard of RA 80 for Colour Rendering Index  
<sup>3</sup> Subject to terms & conditions (Contact Customer Service)



## IP65 LED Panel

- Front face IP65
- Professional LED panel
- 0-10V Dimming or DALI Dimming options available
- White frame
- BELL Driver
- Anti-twist frame
- Emergency panels with 5 year battery guarantee available



## Technical Specification

Data	
Construction	Aluminium + PMMA
Driver	BELL
LED Chip	Philips
IP Rating	IP65 (Front Face)
Operating Temp	0°C to +35°C
Input Voltage	220 - 240V
Power Factor	> 0.9
CRI	85 - Exceeds EU standard of Ra 80 for Colour Rendering Index
LMR	80 - Exceeds EU standard of 70 for Lumens Maintenance Ratio
ECA Compliant	Yes
L1A / L1B / L2A / L2B Compliant	Yes
Emergency Battery Type	NiCd

\* All BELL Lighting luminaires are rated L80 B10, so for a 50,000 hour product. L80B10 at 50,000 hours our fittings will still have 80% of initial lumen, only 10% of fittings will fail to achieve this.

Emergency versions must be tested in line with the requirements of BS5266, failure to do so may effect battery life and warranty.

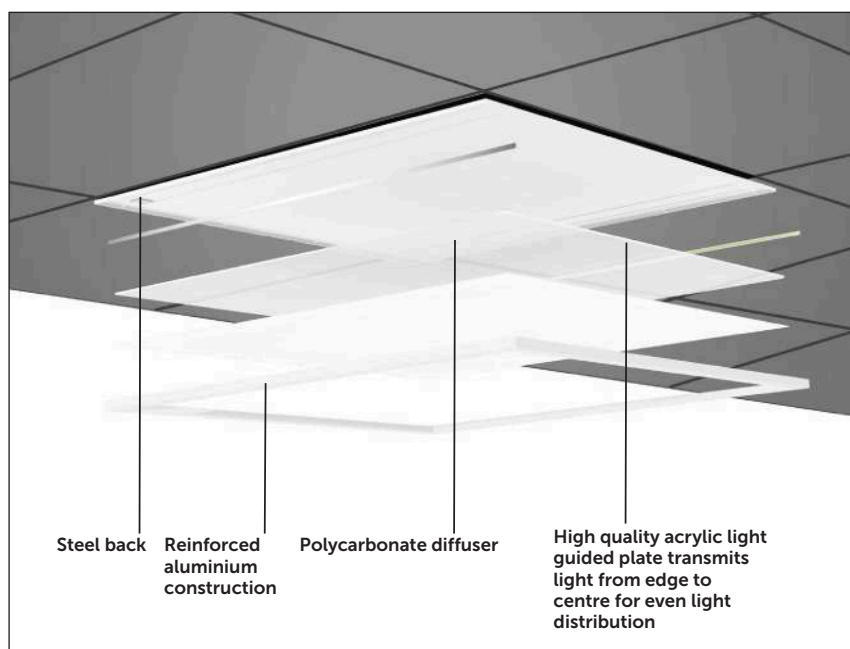
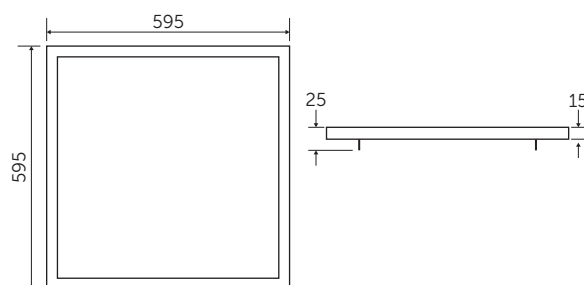
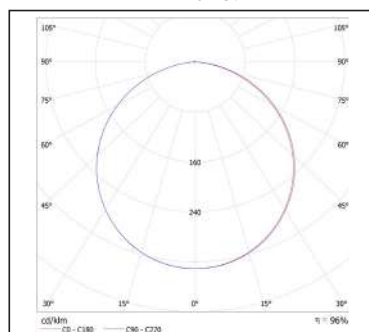
Code	W	Description	lm/W	lm	Temp	Finish	Hours
10047	36	600 x 600 IP65 LED Panel	105	4000	4000K	White	50000
10097	36	600 x 600 IP65 LED Panel Emergency	105	4000	4000K	White	50000
10050	36	600 x 600 IP65 LED Panel 0-10V Dim	105	4000	4000K	White	50000
10049	36	600 x 600 IP65 LED Panel Dali Dim	105	4000	4000K	White	50000

**Available on request:**

- Emergency panels with 5 year battery guarantee
- Emergency 0-10v Dim
- Emergency Dali Dim

For further information call 01924 893380 or email [sales@belllighting.co.uk](mailto:sales@belllighting.co.uk)

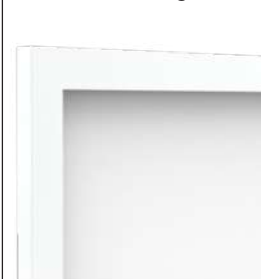
**LED Panel**



**No Light Fall Off**



**Seamless Trim Design**

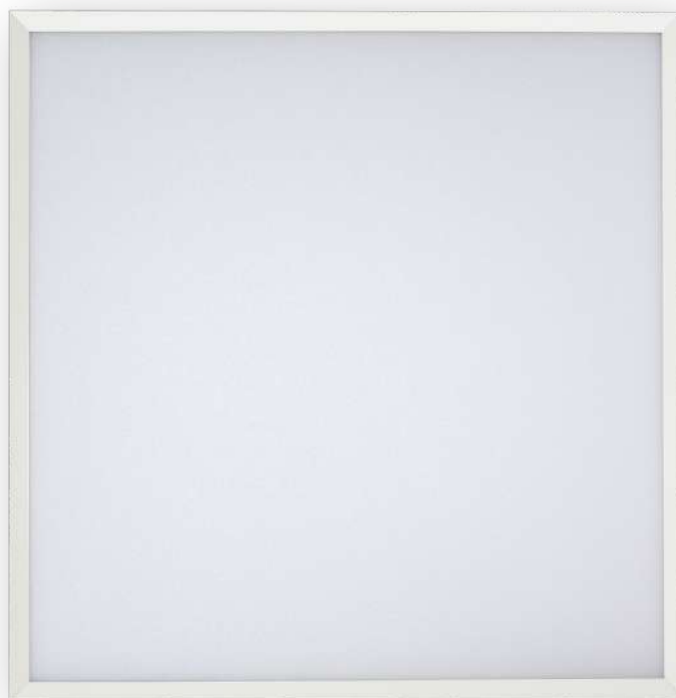


<sup>1</sup> Exceeds EU standard of 70 for Lumens Maintenance Ratio  
<sup>2</sup> Exceeds EU standard of RA 80 for Colour Rendering Index  
<sup>3</sup> Subject to terms & conditions (Contact Customer Service)



## Backlit LED Panel

- Uniform light distribution
- Professional LED Panel
- 0-10V Dimming or DALI Dimming options available
- White finish
- Anti-twist frame
- Innovative fixed connector
- Emergency panels with 5 year battery guarantee available
- CCT option available on request



## Technical Specification

Data	
Construction	Steel + PMMA
Driver	BELL
LED Chip	Philips
IP Rating	IP20
Operating Temp	0°C to +35°C
Input Voltage	220 - 240V
Power Factor	> 0.9
CRI	85 - Exceeds EU standard of Ra 80 for Colour Rendering Index
LMR	80 - Exceeds EU standard of 70 for Lumens Maintenance Ratio
ECA Compliant	Yes
L1A / L1B / L2A / L2B Compliant	Yes
Emergency Battery Type	NiCd

\* All BELL Lighting luminaires are rated L80 B10, so for a 50,000 hour product. L80B10 at 50,000 hours our fittings will still have 80% of initial lumen, only 10% of fittings will fail to achieve this.

Emergency versions must be tested in line with the requirements of BS5266, failure to do so may effect battery life and warranty.

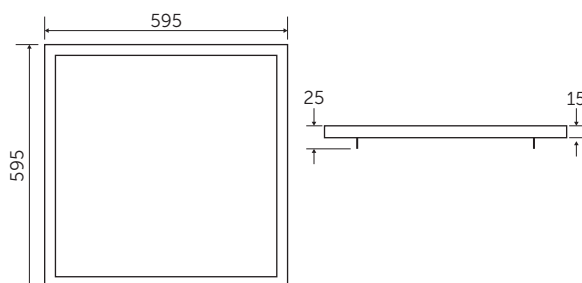
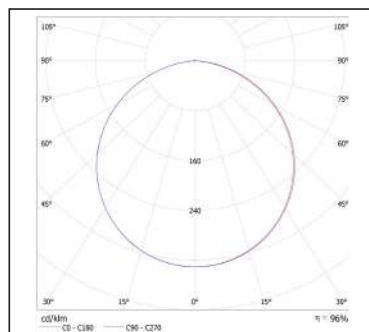
Code	W	Description	lm/W	lm	Temp	Finish	Hours
10130	36	Arial Backlit LED Panel - 600x600mm, 4000K, White	100	3600	4000K	White	50000
10132	36	Arial Backlit LED Panel - 600x600mm, 4000K, Emergency, White	100	3600	4000K	White	50000
10134	36	Arial Backlit LED Panel - 600x600mm, 4000K, White, 0-10V Dim	100	3600	4000K	White	50000
10133	36	Arial Backlit LED Panel - 600x600mm, 4000K, White, Dali Dim	100	3600	4000K	White	50000
10176	25	Arial Backlit LED Panel - 600x600mm, 4000K, White	120	3000	4000K	White	50000
10178	25	Arial Backlit LED Panel - 600x600mm, 4000K, Emergency, White	120	3000	4000K	White	50000
10180	25	Arial Backlit LED Panel - 600x600mm, 4000K, White, 0-10V Dim	120	3000	4000K	White	50000
10179	25	Arial Backlit LED Panel - 600x600mm, 4000K, White, Dali Dim	120	3000	4000K	White	50000

**Available on request:**

- Emergency panels with 5 year battery guarantee
- Emergency 0-10v Dim
- Emergency Dali Dim

For further information call 01924 893380 or email [sales@belllighting.co.uk](mailto:sales@belllighting.co.uk)

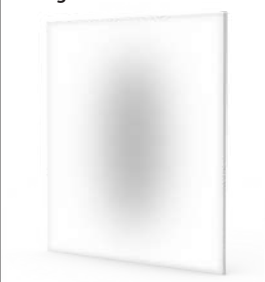
LED Panel



Seamless Trim Design



No Light Fall Off

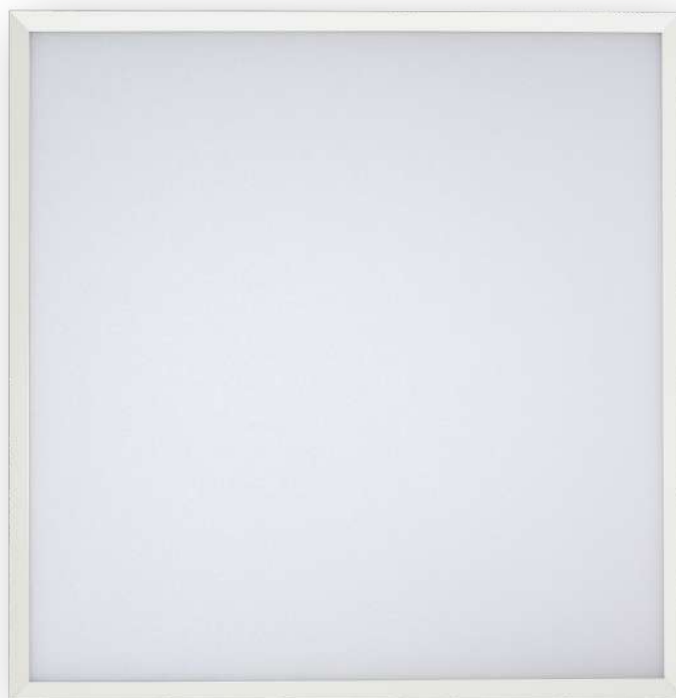


<sup>1</sup> Exceeds EU standard of 70 for Lumens Maintenance Ratio  
<sup>2</sup> Exceeds EU standard of RA 80 for Colour Rendering Index  
<sup>3</sup> Subject to terms & conditions (Contact Customer Service)



## Backlit High Output UGR <19 LED Panels

- High efficiency
- TPa
- Uniform light distribution
- Professional LED Panel
- 0-10V Dimming or DALI Dimming options available
- White finish
- Anti-twist frame
- Innovative fixed connector
- Emergency panels with 5 year battery guarantee available
- CCT option available on request



## Technical Specification

Data	
Construction	Steel + Polycarbonate
Driver	BELL
LED Chip	Philips
IP Rating	IP20
Operating Temp	0°C to +35°C
Input Voltage	220 - 240V
Power Factor	> 0.9
CRI	85 - Exceeds EU standard of Ra 80 for Colour Rendering Index
LMR	80 - Exceeds EU standard of 70 for Lumens Maintenance Ratio
ECA Compliant	Yes
L1A / L1B / L2A / L2B Compliant	Yes
Emergency Battery Type	NiCd

\* All BELL Lighting luminaires are rated L80 B10, so for a 50,000 hour product. L80B10 at 50,000 hours our fittings will still have 80% of initial lumen, only 10% of fittings will fail to achieve this.

Emergency versions must be tested in line with the requirements of BS5266, failure to do so may effect battery life and warranty.

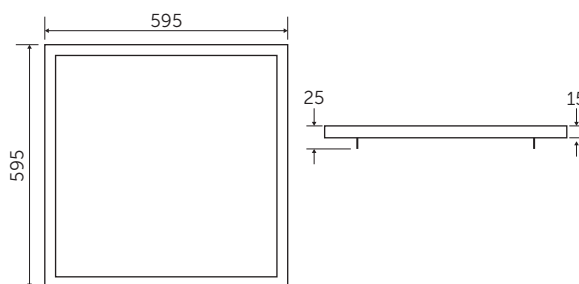
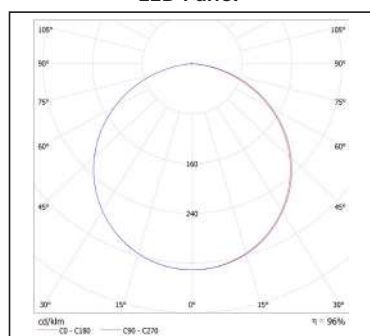
Code	W	Description	lm/W	lm	Temp	Finish	Hours
10140	36	Arial Backlit High Output UGR <19 LED Panel - 600x600mm, 4000K, White	120	4320	4000K	White	50000
10142	36	Arial Backlit High Output UGR <19 LED Panel - 600x600mm, 4000K, Emergency, White	120	4320	4000K	White	50000
10144	36	Arial Backlit High Output UGR <19 LED Panel - 600x600mm, 4000K, White, 0-10V Dim	120	4320	4000K	White	50000
10143	36	Arial Backlit High Output UGR <19 LED Panel - 600x600mm, 4000K, White, Dali Dim	120	4320	4000K	White	50000
10168	25	Arial Backlit High Output UGR <19 LED Panel - 600x600mm, 4000K, White	130	3250	4000K	White	50000
10170	25	Arial Backlit High Output UGR <19 LED Panel - 600x600mm, 4000K, Emergency, White	130	3250	4000K	White	50000
10175	25	Arial Backlit High Output UGR <19 LED Panel - 600x600mm, 4000K, White, 0-10V Dim	130	3250	4000K	White	50000
10171	25	Arial Backlit High Output UGR <19 LED Panel - 600x600mm, 4000K, White, Dali Dim	130	3250	4000K	White	50000

Available on request:

- Emergency panels with 5 year battery guarantee
- Emergency 0-10v Dim
- Emergency Dali Dim

For further information call 01924 893380 or email [sales@belllighting.co.uk](mailto:sales@belllighting.co.uk)

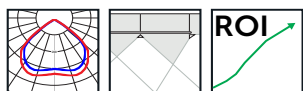
#### LED Panel



**UGR** (Unified Glare Rating) is a method of calculating glare from light sources.

The UGR rating helps to determine how likely a light source is to cause discomfort to those around it. This classification ranges from 5 to 40, with low numbers indicating low glare.

Glare can be a common problem in workplaces. Inappropriate lighting or excessive brightness can be bounced off reflective surfaces, such as computer screens, whiteboards etc. This can cause disruption for the occupants of offices.



<sup>1</sup> Exceeds EU standard of 70 for Lumens Maintenance Ratio  
<sup>2</sup> Exceeds EU standard of RA 80 for Colour Rendering Index  
<sup>3</sup> Subject to terms & conditions (Contact Customer Service)

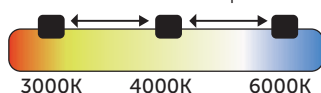


## Troffer LED CCT Panel

- High efficiency
- Aesthetic light distribution
- Contemporary design
- TPa
- Professional LED Panel
- 0-10V Dimming or DALI Dimming options available
- White finish
- Innovative fixed connector
- Emergency panels with 5 year battery guarantee available



Selectable Colour Temperature



## Technical Specification

Data	
Construction	Steel+ Polycarbonate
Driver	BELL
LED Chip	Philips
IP Rating	IP20
Operating Temp	0°C to +35°C
Input Voltage	220 - 240V
Power Factor	> 0.9
CRI	85 - Exceeds EU standard of Ra 80 for Colour Rendering Index
LMR	80 - Exceeds EU standard of 70 for Lumens Maintenance Ratio
ECA Compliant	Yes
L1A / L1B / L2A / L2B Compliant	Yes
Emergency Battery Type	NiCd

\* All BELL Lighting luminaires are rated L80 B10, so for a 50,000 hour product. L80B10 at 50,000 hours our fittings will still have 80% of initial lumen, only 10% of fittings will fail to achieve this.

Emergency versions must be tested in line with the requirements of BS5266, failure to do so may effect battery life and warranty.



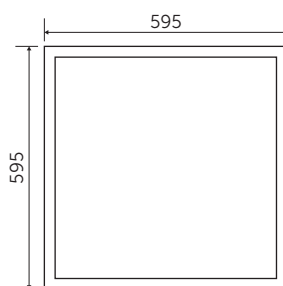
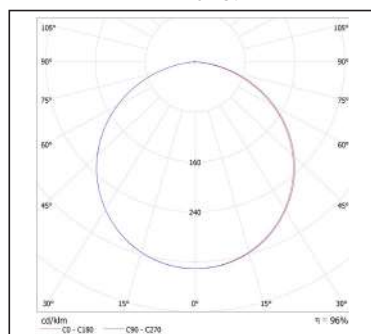
Code	W	Description	lm/W	lm	Temp	Finish	Hours
10120	36	Arial Troffer CCT LED Panel - 600x600mm, White	115	3800	3/4/6000K	White	50000
10121	36	Arial Troffer CCT LED Panel - 600x600mm, Emergency, White	115	3800	3/4/6000K	White	50000
10125	36	Arial Troffer CCT LED Panel - 600x600mm, White, 0-10V Dim	115	3800	3/4/6000K	White	50000
10122	36	Arial Troffer CCT LED Panel - 600x600mm, White, Dali Dim	115	3800	3/4/6000K	White	50000

Available on request:

- Emergency panels with 5 year battery guarantee
- Emergency 0-10v Dim
- Emergency Dali Dim

For further information call 01924 893380 or email [sales@belllighting.co.uk](mailto:sales@belllighting.co.uk)

LED Panel



- <sup>1</sup> Exceeds EU standard of 70 for Lumens Maintenance Ratio  
<sup>2</sup> Exceeds EU standard of RA 80 for Colour Rendering Index  
<sup>3</sup> Subject to terms & conditions (Contact Customer Service)



## Smart LED Downlight

- FireStay Certification: 30, 60 and 90 minute solid joist ceilings  
30 minute I-Joist ceiling systems (certification pending)
- Bluetooth connected Smart Downlight
- Dimmable 100% - 10%
- Easy Fit Magnetic Bezel
- Tunable white 2200k - 6300K
- Includes white and satin magnetic bezels
- IP65 as standard
- Part B / C / E compliant
- Dimmable
- Part L compliant
- Insulation coverable (IC rated)

Optional slim profile  
designed wall plate



**FREE**  
BELL Smart Connect App  
for Android and IOS



Works with BELL Smart Connect App



Code	Description	Colour Temperature	lm	cd	Beam°	Hrs
10550	7W Firestay Smart Connect Downlight, IP65, Tunable Colour Temp, Dimmable, incl White & Satin Bezels	2200K - 6300K	530-600	530	40°	50000
10556	Wall Plate for Firestay LED Smart Connect - White	-	-	-	-	-
10560	Chrome Bezel for Firestay LED Smart Connect	-	-	-	-	-
10561	Brass Bezel for Firestay LED Smart Connect	-	-	-	-	-
10562	Antique Brass Magnetic Bezel for above	-	-	-	-	-
10563	Matt Black Magnetic Bezel for above	-	-	-	-	-
08193	White Spacer Plate for above (100mm cut out)	-	-	-	-	-
08194	Satin Spacer Plate for above (100mm cut out)	-	-	-	-	-

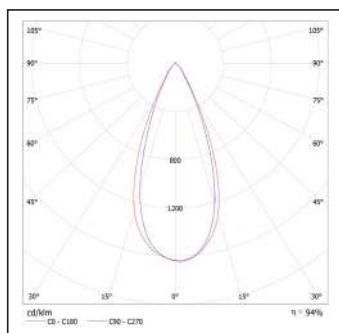


# Technical Specification

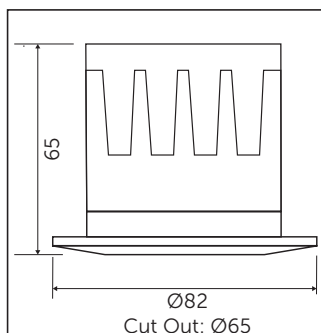
Data	
Construction	Aluminium
Driver	BELL
LED Chip	Sharp
IP Rating	IP65
Operating Temp	-5°C to +35°C
Input Voltage	220 - 240V
Power Factor	> 0.9
CRI	85 - Exceeds EU standard of Ra 80 for Colour Rendering Index
LMR	80 - Exceeds EU standard of 70 for Lumens Maintenance Ratio

\* All BELL Lighting luminaires are rated L80 B10, so for a 50,000 hour product. L80B10 at 50,000 hours our fittings will still have 80% of initial lumen, only 10% of fittings will fail to achieve this.

10550 7W



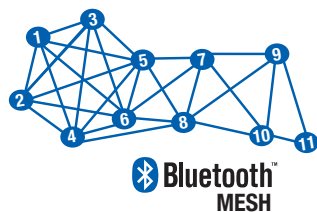
10550



Log on to the BELL Lighting YouTube channel for further details, or scan the code opposite.

## Bluetooth Mesh Technology

Mesh is a network topology used for establishing many-to-many (m:m) device communications. The mesh topology available on Bluetooth enables the creation of large-scale device networks and is ideally suited for control, monitoring, and automation systems where tens, hundreds, or thousands of devices need to reliably and securely communicate with one another.



## Use the BELL Smart Connect App to:

- Group lights in any configuration.
- Dim and change colour temperature.
- Create Scenes to store preferred settings, dim lounge lights to watch a movie.
- Set events, turn the lights on and off when you are away from home, or wake you up by slowly increasing the brightness of selected lights.



<sup>1</sup> Exceeds EU standard of 70 for Lumens Maintenance Ratio  
<sup>2</sup> Exceeds EU standard of RA 80 for Colour Rendering Index  
<sup>3</sup> Subject to terms & conditions (Contact Customer Service)



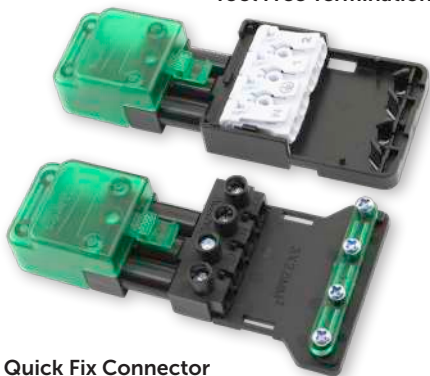
# FirestayLED

CCT 3 way selectable colour switch

## Integrated LED Fixed Downlight

- FireStay Certification: 30, 60 and 90 minute solid joist ceilings  
30 minute I-Joist ceiling systems
- Fixed Downlight IP65
- Fixed Downlight Front CCT switch
- 6 in 1 Fixture, 3 colour temperatures, 2 bezel
- Includes satin & white magnetic bezels
- Part B / C / E compliant
- IC rated
- 7 year Guarantee (Excluding Battery)<sup>3</sup>

Quick Fix Connector  
Tool Free Termination



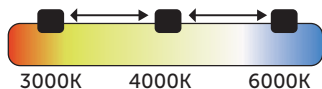
Quick Fix Connector  
Screw Fix Termination



IC Rated up to  
350mm insulation

Emergency versions must be tested in line with the requirements of BS5266, failure to do so may effect battery life and warranty.

Selectable Colour Temperature



Simply move the switch located under the magnetic bezel to your desired colour temperature



Silent Dimming  
On All  
Lamps &  
Fittings  
Flicker Free

**Universal LED Trailing Edge Dimmer Module:**

LED Dimmable bulb - Min 5W ~ Max 100W - 10 Downlights maximum

LED Dimmable driver - Min 5W ~ Max 100W - 10 Downlights maximum

Code: 10801





# FirestayLED

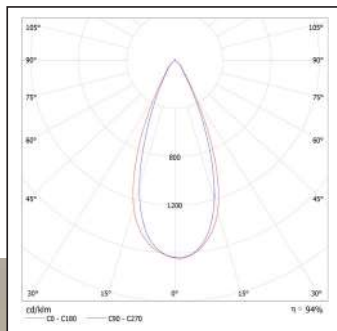
CCT 3 way selectable colour switch

## Technical Specification

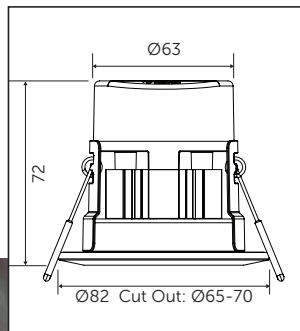
Data	
Construction	Die-Cast Aluminium
Driver	On Board
LED Chip	Epistar
IP Rating	IP65
Operating Temp	-5°C to +35°C
Input Voltage	220 - 240V
Power Factor	> 0.9
CRI	85 - Exceeds EU standard of Ra 80 for Colour Rendering Index
LMR	80 - Exceeds EU standard of 70 for Lumens Maintenance Ratio

\* All BELL Lighting luminaires are rated L80 B10, so for a 50,000 hour product. L80B10 at 50,000 hours our fittings will still have 80% of initial lumen, only 10% of fittings will fail to achieve this.

08187 7W



08186/08187/10510



Code	Description	Colour Temperature	lm	cd	Beam <sup>0</sup>	Hrs
08186	7W Firestay LED CCT 3 Way Selectable Colour Switch Downlight Dimmable, Plug & Play, 60° Beam Angle. <b>Screw Fix Termination</b>	3000K/4000K/6000K	530/550/600	370	60°	50000
08187	7W Firestay LED CCT 3 Way Selectable Colour Switch Downlight Dimmable, Plug & Play, 40° Beam Angle. <b>Screw Fix Termination</b>	3000K/4000K/6000K	530/550/600	530	40°	50000
10510	7W Firestay LED CCT 3 Way Selectable Colour Switch Downlight Dimmable, Plug & Play, 40° Beam Angle. <b>Tool Free Termination</b>	3000K/4000K/6000K	530/550/600	530	40°	50000
10560	Chrome Magnetic Bezel for above	-	-	-	-	-
10561	Brass Magnetic Bezel for above	-	-	-	-	-
10562	Antique Brass Magnetic Bezel for above	-	-	-	-	-
10563	Matt Black Magnetic Bezel for above	-	-	-	-	-
08193	White Spacer Plate for above (100mm cut out)	-	-	-	-	-
08194	Satin Spacer Plate for above (100mm cut out)	-	-	-	-	-



<sup>1</sup> Exceeds EU standard of 70 for Lumens Maintenance Ratio  
<sup>2</sup> Exceeds EU standard of RA 80 for Colour Rendering Index  
<sup>3</sup> Subject to terms & conditions (Contact Customer Service)



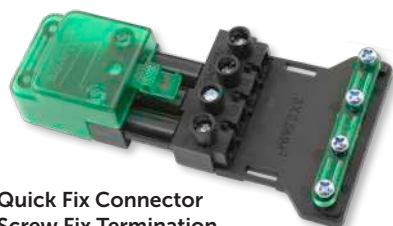
# FirestayLED

CCT 3 way selectable colour switch

## Integrated LED Centre Tilt Downlight

- FireStay Certification: 30, 60 and 90 minute solid joist ceilings  
30 minute I-Joist ceiling systems (certification pending)
- Centre Tilt IP65
- Centre Tilt - Front CCT switch
- 6 in 1 Fixture, 3 colour temperatures, 2 bezel
- Includes satin & white magnetic bezels
- Part B / C / E compliant
- IC rated
- 7 year Guarantee (Excluding Battery)<sup>3</sup>

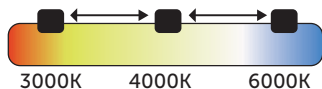
IC Rated up to  
350mm insulation



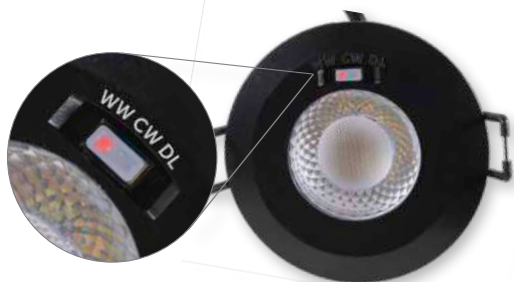
Quick Fix Connector  
Screw Fix Termination

Emergency versions must be tested in line with the requirements of BS5266, failure to do so may effect battery life and warranty.

Selectable Colour Temperature



Simply move the switch located under the magnetic bezel to your desired colour temperature



**Universal LED Trailing Edge Dimmer Module:**

LED Dimmable bulb - Min 5W ~ Max 100W - 10 Downlights maximum

LED Dimmable driver - Min 5W ~ Max 100W - 10 Downlights maximum

Code: 10801





# FirestayLED

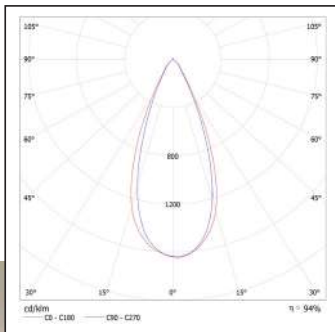
CCT 3 way selectable colour switch

## Technical Specification

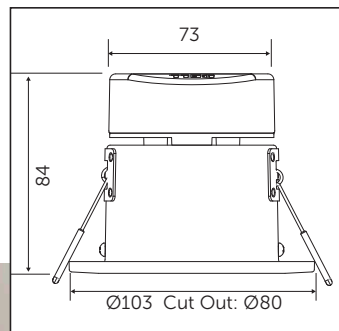
Data	
Construction	Die-Cast Aluminium
Driver	On Board
LED Chip	Epistar
IP Rating	IP65
Operating Temp	-5°C to +35°C
Input Voltage	220 - 240V
Power Factor	> 0.9
CRI	85 - Exceeds EU standard of Ra 80 for Colour Rendering Index
LMR	80 - Exceeds EU standard of 70 for Lumens Maintenance Ratio

\* All BELL Lighting luminaires are rated L80 B10, so for a 50,000 hour product. L80B10 at 50,000 hours our fittings will still have 80% of initial lumen, only 10% of fittings will fail to achieve this.

08190 7W



08190



Code	Description	Colour Temperature	lm	cd	Beam <sup>0</sup>	Hrs
08190	7W Firestay CCT 3 Way Selectable Colour Switch Center Tilt LED Downlight, Dimmable, Plug & Play, 40° Beam Angle. <b>Screw Fix Termination</b>	3000K/4000K/6000K	530/550/600	660	40°	50000
08200	Chrome Magnetic Bezel for above	-	-	-	-	-
08201	Brass Magnetic Bezel for above	-	-	-	-	-
08202	Antique Brass Magnetic Bezel for above	-	-	-	-	-
08203	Matt Black Magnetic Bezel for above	-	-	-	-	-
08196	Emergency Pack for Firestay LED Downlights	-	-	-	-	-
10801	Universal LED Trailing Edge Dimmer Module	-	-	-	-	-



<sup>1</sup> Exceeds EU standard of 70 for Lumens Maintenance Ratio  
<sup>2</sup> Exceeds EU standard of RA 80 for Colour Rendering Index  
<sup>3</sup> Subject to terms & conditions (Contact Customer Service)



Distributed by

©2020 British Electric Lamps Ltd. No part of this publication may be reproduced, stored in a retrieval system, or transmitted in any form, or by any means, electronic, mechanical, photocopying, recording or otherwise, without the prior permission of the publisher and copyright holder.  
E&OE. As it is our policy to continually update our products with the latest in technological advances, the information and images contained in this catalogue are subject to change without notice. All measurements stated are approximate to within production tolerances of +/-5mm.



**British Electric Lamps Ltd**  
Unit A Foxbridge Way  
Normanton Industrial Estate  
Normanton  
West Yorkshire  
WF6 1TN

T: +44 (0)1924 893380  
F: +44 (0)1924 894320  
E: sales@belllighting.co.uk

[www.belllighting.co.uk](http://www.belllighting.co.uk)



Certificate Number 12255  
ISO 9001: 2015

