

Installation Instructions: Brick Light (10390- 10393)

Important Information

We recommend that luminaires are installed by a qualified electrician ensuring the installation complies with current IEE wiring regulations BS7671:2018 & local building control.

- BELL will not accept responsibility for any claims arising from a poor installation.

Important User Advice

- The ambient room temperature should not exceed 25°C.
- Ensure that there is adequate free air ventilation around the fitting.
- Always switch off mains supply before installing.

This product may contain substances that can be hazardous to the environment if not disposed of properly. Electrical and electronic equipment should never be disposed of with general household waste but must be separated for its correct treatment and recovery.

Where possible recycle your packaging.



These fittings should not be used in a retaining wall where the ground may become saturated as this may compromise the IP rating.



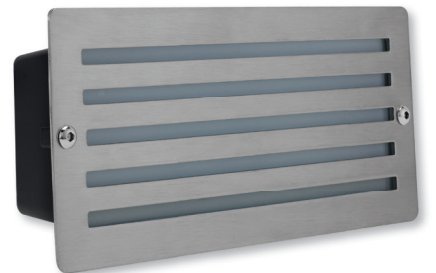
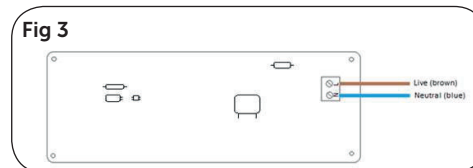
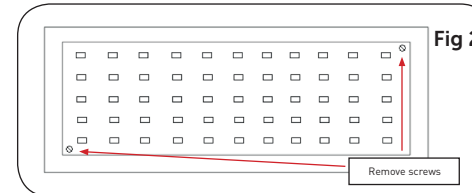
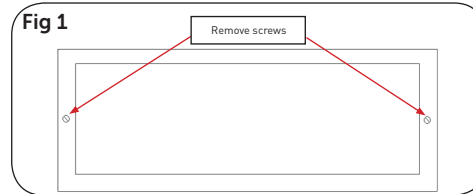
Read these instructions before installation and retain for future reference



This equipment should be installed by a competent electrician

Installation

- Provide power to the required point of installation. Suitable IP rated junctions boxes should be used where required
- Remove the 2 screws holding the bezel and glass in place, see **Fig 1**
- Using the base plate as a template, mark the location of the fixing holes, and drill the holes ensuring not to infringe with any joists, gas or water pipes or electrical cables
- Feed mains cable through the rubber grommet to retain IP rating and secure base plate to the desired surface
- Remove the 2 screws securing the PCB in position, see **Fig 2**
- Feed the cable through the fitting using an appropriate compression gland or rubber grommet to ensure IP rating is maintained
- Secure the brick light using fixings suitable for the environment of the installation and substrate
- Ensuring that correct polarity is observed, wire mains cable into the PCB terminal block, see **Fig 3**
- Refit the PCB board into the fitting and fasten the two screws
- Refit the glass and bezel and secure with the two screws
- Switch on and check for correct operation



Technical Helpline +44 (0)1924 893380

www.belllighting.co.uk

British Electric Lamps Ltd
Unit A Foxbridge Way, Normanton Industrial Estate
Normanton, West Yorkshire. WF6 1TN

T: +44 (0)1924 893380 F: +44 (0)1924 894320 E: sales@belllighting.co.uk

www.belllighting.co.uk