

## Important Information

We recommend that luminaires are installed by a qualified electrician ensuring the installation complies with current IEE wiring regulations BS7671:2018 & local building control.

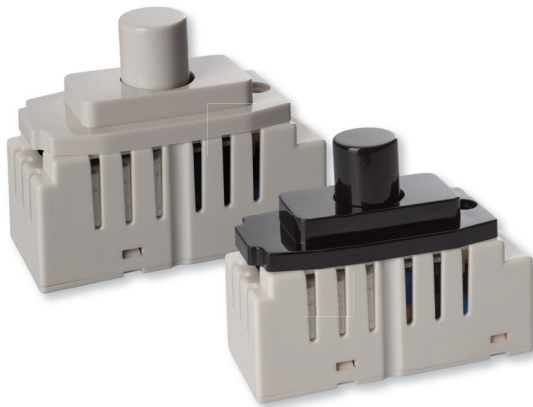
- All tests should be carried out in accordance to EN 50172:2004.
- BELL will not accept responsibility for any claims arising from a poor installation.

## Important User Advice

- The ambient room temperature should not exceed 30°C.
- Always switch off mains supply before installing.

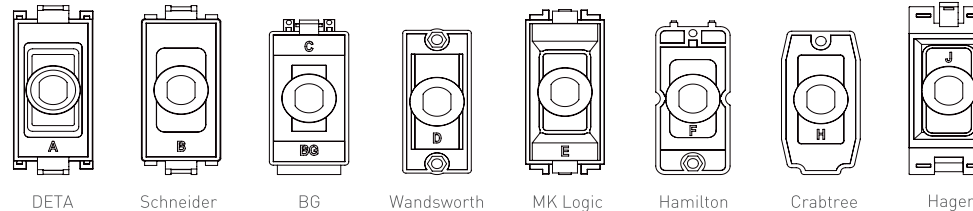
This product may contain substances that can be hazardous to the environment if not disposed of properly. Electrical and electronic equipment should never be disposed of with general household waste but must be separated for its correct treatment and recovery.

Where possible recycle your packaging.






Read these instructions before installation and retain for future reference

This equipment should be installed by a competent electrician



This dimmer has been developed specially for Dimmable LED Lamps.

Suitable for 8 UK standard Grid systems (above)

Specification	
Operating Voltage	220-240 V
Frequency	50 Hz
Maximum Load	400 W
Minimum Load	5 W
Dimming Mode	Trailing Edge
Control Method	Two way
Dimmable LED lamps	5-250W
	
LV Halogen lighting with electronic transformers	10-400VA
	
Incandescent lighting, MV Halogen lamps	10-400VA
	

## De-rating of multiple dimmers

De-rating required when installed in multi-gang

Dimmers per plate	De-rated wattage
1 per plate	No De-rating
2 per plate	85% Each dimmer
3 per plate	70% Each dimmer
4 per plate	55% Each dimmer
5 per plate	40% Each dimmer

## Operation

Adjust the min./max. brightness level and resetting button.

There are two micro adjustments for Min&Max brightness settings.

The left adjuster is for MAX brightness level, while the right adjuster is for MIN brightness level.



## Wiring

This dimmer switch is suitable for 1-way or 2-way lighting circuits. There are three terminals per module.

### 1 way Circuits

In 1-way lighting circuits each lamp is controlled by one dimmer switch.

Follow the wiring in Figure 1.

L live supply,  load

### 2 way Circuits

When controlling the load from two positions, it is only possible to have one dimmer switch and another one is a 2-way switch. The dimmer can on off and dim the lights while the switch can only turn on and off the lights from different place

Follow the wiring in Figure 2.

L live supply,  load

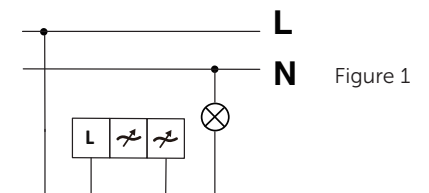


Figure 1

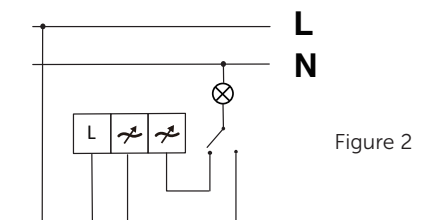


Figure 2