

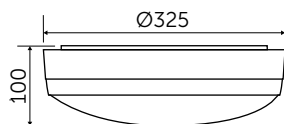




LED Bulkhead

One of our most popular LED Bulkheads, the Aqua2 has stood the test of time. This cost-effective replacement for 28W 2D fittings is supplied with a high transmission frosted diffuser and is IP65 as standard.

- Supplied with white trim, easy fit chrome and satin trims available
- The smart replacement for 28W 2D Fittings
- Tri level control now included on corridor dim versions
- Emergency option
- Microwave and corridor dimming function option
- High transmission frosted diffuser
- No lamp replacement
- No maintenance
- 35000 hour life
- IP65 Sealed fitting
- 8M detection range on corridor dim option (2.6m mounting height)
- Rear cable entry





LED Bulkhead

Technical Specification

Construction	Polycarbonate body and lens
Driver	BELL
LED Chip	Samsung
IP Rating	IP65
Operating Temp	-20°C to +35°C
Input Voltage	220 - 240V
Power Factor	> 0.9
CRI	85 - Exceeds EU standard of Ra 80 for Colour Rendering Index
LMR	80 - Exceeds EU standard of 70 for Lumens Maintenance Ratio

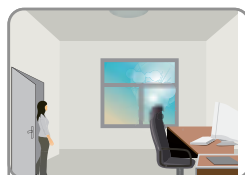
* All BELL Lighting luminaires are rated L80 B10, so for a 50,000 hour product. L80B10 at 50,000 hours our fittings will still have 80% of initial lumen, only 10% of fittings may fail to achieve this.

Code	W	Description	Lm	Temp	Hours
06636	14	Aqua2 LED Bulkhead Standard Version (No Sensor)	1100	3500K	35000
06637	14	Aqua2 LED Bulkhead Standard Version (No Sensor) Emergency 3 hour maintained	1100	3500K	35000
06638	14	Aqua2 LED Bulkhead Microwave Version On/Off With Presence Detection	1100	3500K	35000
06639	14	Aqua2 LED Bulkhead Microwave Version On/Off With Presence Detection, Emergency 3 hour maintained	1100	3500K	35000
06640	14	Aqua2 LED Bulkhead Microwave Version with Corridor Dim Function	1100	3500K	35000
06641	14	Aqua2 LED Bulkhead Microwave Version with Corridor Dim Function, Emergency 3 hour maintained	1100	3500K	35000
06634	-	Chrome ring accessory	-	-	-
06635	-	Satin ring accessory	-	-	-

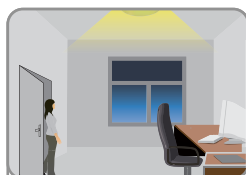
Microwave Max Operating Height 3.2m

Emergency versions must be tested in line with the requirements of BS5266, failure to do so may effect battery life and warranty

Tri-Level Control (Corridor Function)



With sufficient natural light, the fitting does not switch on when presence is detected.



With insufficient natural light, the sensor switches on automatically when someone enters the room.



When the room is empty, light dims to stand-by level (10% / 20% / 30%) after the hold-time.



Light switched off automatically after the stand-by period has elapsed.

Offers 3 levels of light: 100%-dimmed light (10%, 20%, 30%)-off; and 2 periods of selectable waiting time: motion hold-time and stand-by period; selectable daylight threshold and choice of detection area.

www.belllighting.co.uk

