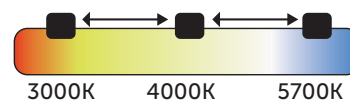




Selectable Colour Temperature



## LED Bulkhead

- Selectable colour temperature version 3000K/4000K/5700K available
- Supplied with white trim. Chrome, satin, copper and antique brass trims available
- The smart replacement for 2D and PL decorative fittings
- 8M detection range on corridor dim option
- Emergency option
- Microwave and corridor dimming function option (non CCT version)
- Rear entry

12W 28W **57%**

18W 38W **52%**

25W 55W **54%**



Code	W	Description	lm	lm/w	Temp	Hours
06830	12	Deco Slim LED Bulkhead CCT Standard On/Off	1056	88	3/4/6000K	35000
06831	18	Deco Slim LED Bulkhead CCT Standard On/Off	1620	90	3/4/6000K	35000
06832	25	Deco Slim LED Bulkhead CCT Standard On/Off	2150	86	3/4/6000K	35000
06833	12	Deco Slim LED Bulkhead CCT Emergency	1056	88	3/4/6000K	35000
06834	18	Deco Slim LED Bulkhead CCT Emergency	1620	90	3/4/6000K	35000
06835	25	Deco Slim LED Bulkhead CCT Emergency	2150	86	3/4/6000K	35000
06740	12	Deco Slim LED Bulkhead Standard On/Off	1056	88	4000K	35000
06741	18	Deco Slim LED Bulkhead Standard On/Off	1620	90	4000K	35000
06742	25	Deco Slim LED Bulkhead Standard On/Off	2150	86	4000K	35000
06743	12	Deco Slim LED Bulkhead Emergency	1056	88	4000K	35000
06744	18	Deco Slim LED Bulkhead Emergency	1620	90	4000K	35000
06745	25	Deco Slim LED Bulkhead Emergency	2150	86	4000K	35000
06752	-	Satin Trim for 12W Deco Slim LED Bulkhead	-	-	-	-
06753	-	Satin Trim for 18/25W Deco Slim LED Bulkhead	-	-	-	-
06754	-	Chrome Trim for 12W Deco Slim LED Bulkhead	-	-	-	-
06755	-	Chrome Trim for 18/25W Deco Slim LED Bulkhead	-	-	-	-
06756	-	Copper Trim for 12W Deco Slim LED Bulkhead	-	-	-	-
06757	-	Copper Trim for 18/25W Deco Slim LED Bulkhead	-	-	-	-
06758	-	Antique Brass Trim for 12W Deco Slim LED Bulkhead	-	-	-	-
06759	-	Antique Brass Trim for 18/25W Deco Slim LED Bulkhead	-	-	-	-

Contact Customer Service for Emergency, Microwave and Corridor Dimming options

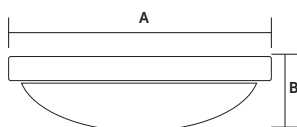
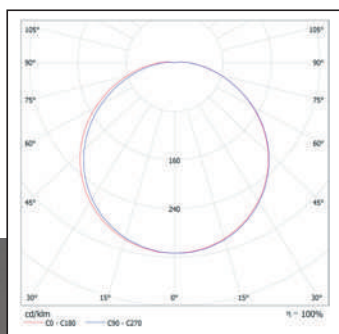


# Technical Specification

Data	
Construction	Polycarbonate
Driver	BELL
LED Chip	Samsung
IP Rating	IP54
Operating Temp	-20°C to +35°C / Emergency version minimum temperature -5°C
Input Voltage	220 - 240V
Power Factor	> 0.9
CRI	85 - Exceeds EU standard of Ra 80 for Colour Rendering Index
LMR	80 - Exceeds EU standard of 70 for Lumens Maintenance Ratio
L1A / L1B / L2A / L2B Compliant	No

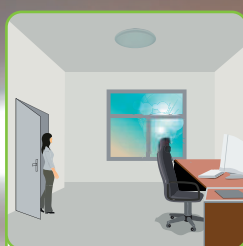
\* All BELL Lighting luminaires are rated L80 B10, so for a 50,000 hour product. L80B10 at 50,000 hours our fittings will still have 80% of initial lumen, only 10% of fittings will fail to achieve this.

06740 12W

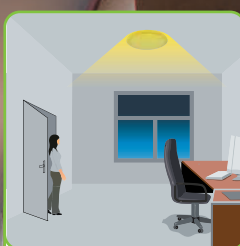


Model	A Ø	B Depth
12W	250mm	48mm
18W	300mm	48mm
25W	300mm	48mm

Emergency versions must be tested in line with the requirements of BS5266, failure to do so may effect battery life and warranty.



With sufficient natural light, the light does not switch on when presence is detected.



With insufficient natural light, the sensor switches on automatically when someone enters the room.



When the room is empty, light dims to stand-by level (10% / 20% / 30%) after the hold-time.



Light switched off automatically after the stand-by period has elapsed.

## Tri-Level Control (Corridor Function)

Offers 3 levels of light: 100%-dimmed light (10%, 20%, 30%)-off; and 2 periods of selectable waiting time: motion hold-time and stand-by period; selectable daylight threshold and choice of detection area.



Exceeds EU standard of 70 for Lumens Maintenance Ratio  
Exceeds EU standard of RA 80 for Colour Rendering Index  
Subject to terms & conditions (Contact Customer Service)