



Illumina

LED High/Low Bay

- Genuine replacement for 250/400W Metal Halide
- Suitable for High Bay and Low Bay applications 4 - 12m
- Fully sealed fixture, ideal for food preparation & cold store areas when used with plastic cover (code: 08833/08834)
- IP65 Base Unit
- Meanwell Driver
- Anthracite Finish
- Bridgelux LED
- 50000 Hours
- Now with 1-10V dimmable driver as standard
- Photocell option now available - Call for details



120W \equiv 250W MH Energy Saving 52%

180W \equiv 400W MH Energy Saving 55%



Code	W	Description	Lm	Temp	Weight Kg	Hours
08835	120	Illumina IP65 120W High Bay / Low Bay Base Unit	17000*	4500K	4.46	50000
08836	180	Illumina IP65 180W High Bay / Low Bay Base Unit	26000**	4500K	7.91	50000


Code	Description
08827	120° Aluminium Reflector for 120W Illumina IP65 High Bay / Low Bay
08828	90° Aluminium Reflector for 120W Illumina IP65 High Bay / Low Bay
08831	90° Polycarbonate Reflector for 120W Illumina IP65 High Bay / Low Bay
08833	Plastic Cover for 120W Illumina IP65 High Bay / Low Bay - Required for IP65 rating
08829	120° Aluminium Reflector for 180W Illumina IP65 High Bay / Low Bay
08830	90° Aluminium Reflector for 180W Illumina IP65 High Bay / Low Bay
08832	90° Polycarbonate Reflector for 180W Illumina IP65 High Bay / Low Bay
08834	Plastic Cover for 180W Illumina IP65 High Bay / Low Bay - Required for IP65 rating



¹ Exceeds EU standard of 70 for Lumens Maintenance Ratio
² Exceeds EU standard of Ra 80 for Colour Rendering Index
³ Subject to terms & conditions (Contact Customer Service)
⁴ When used with plastic cover 08833/08834
 * IP65 version 15500 lm ** IP65 version 23000 lm

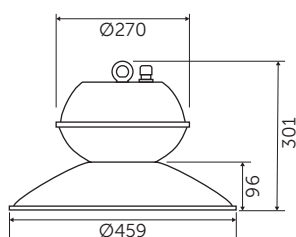


Technical Specification

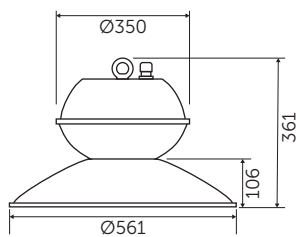
Data	
Construction	Die Cast Aluminium Base
Driver	1-10V Dimmable Meanwell  /HLG
LED Chip	Bridgelux
IP Rating	IP65 (with cover)
Operating Temp	-30°C to +35°C
Input Voltage	100 - 264V
Power Factor	> 0.9
CRI	85 - Exceeds EU standard of Ra 80 for Colour Rendering Index
LMR	80 - Exceeds EU standard of 70 for Lumens Maintenance Ratio
ECA Compliant	Yes

* All BELL Lighting luminaires are rated L80 B10, so for a 50,000 hour product. L80B10 at 50,000 hours our fittings will still have 80% of initial lumen, only 10% of fittings will fail to achieve this.

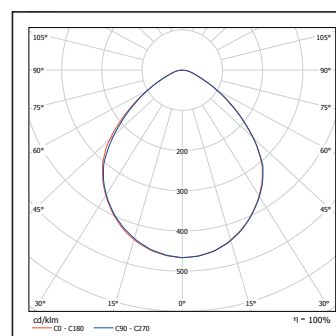
08835 120W 120°



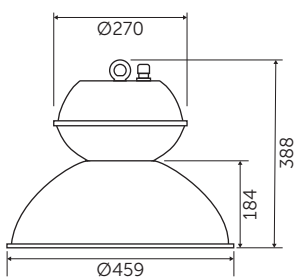
08836 180W 120°



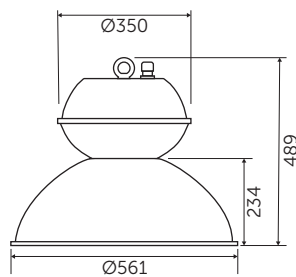
08835 120W 120°



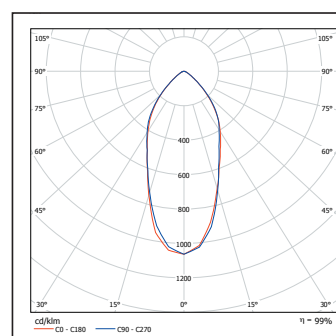
08835 120W 90°



08836 180W 90°



08836 180W 90°



Aluminium Reflector



Polycarbonate Reflector

